



NATIONAL ENDOWMENT FOR THE

Humanities

January to March 2013

DIVISION OF PUBLIC PROGRAMS

EVENTS, EXHIBITIONS, AND PROGRAMS

EXHIBITION OPENINGS

JANUARY

January 1 to February 28

BRONX LIBRARY CENTER,
Bronx, NY

Lincoln and New York

Traveling. Organized by the New-York Historical Society.
www.lincolinandnewyork.org

January 9 to February 22

AUGUSTA STATE UNIVERSITY,
Augusta, GA

Pride and Passion: The African American Baseball Experience

Traveling. Organized by the American Library Association. www.ala.org

January 12 to May 5

LYNCHBURG MUSEUM,
Lynchburg, VA

An American Turning Point: The Civil War in Virginia: Waging War

Traveling. Organized by the Virginia Sesquicentennial of the American Civil War Commission. www.virginiacivilwar.org

January 14 to April 14

BROWN UNIVERSITY, JOHN CARTER BROWN LIBRARY, Providence, RI

Revolution!: The Atlantic World Reborn

Traveling. Organized by the New-York Historical Society. www.nyhistory.org

January 16 to March 1

HUDSON VALLEY COMMUNITY COLLEGE, DWIGHT MARVIN LIBRARY, Troy, NY

Lincoln: The Constitution and the Civil War

Traveling. Organized by the National Constitution Center.
www.ala.org/ala/aboutala/offices/ppo/programming/lincoln/index.cfm

January 20 to April 13

ATLANTA UNIVERSITY CENTER, ROBERT W. WOODRUFF LIBRARY, Atlanta, GA

Teenie Harris, Photographer: An American Story

Traveling. Organized by the Carnegie Institute Museum of Art. web.cmoa.org

January 23 to February 22

EASTERN MENNONITE UNIVERSITY, Harrisonburg, VA

Manifold Greatness: The Creation and Afterlife of the King James Bible

Traveling. Organized by the Folger Shakespeare Library and the American Library Association. www.ala.org

January 23 to February 22

ELIZABETHTOWN COLLEGE, Elizabethtown, PA

Manifold Greatness: The Creation and Afterlife of the King James Bible

Traveling.

January 23 to February 22

LOYOLA MARYMOUNT UNIVERSITY, Los Angeles, CA

Manifold Greatness: The Creation and Afterlife of the King James Bible

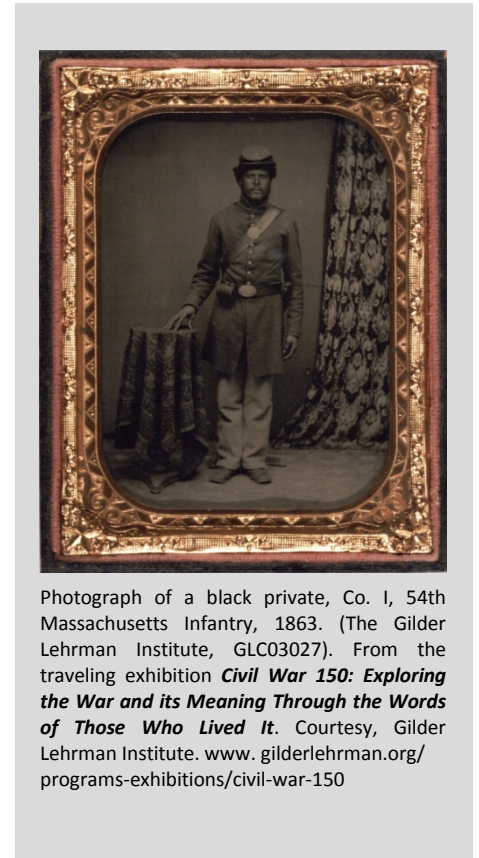
Traveling.

January 28 to February 18

GREENWOOD PUBLIC LIBRARY, Greenwood, IN

Civil War 150: Exploring the War and its Meaning Through the Words of Those Who Lived It

Traveling. Organized by the Library of America. www.gilderlehrman.org/programs-exhibitions/civil-war-150



Photograph of a black private, Co. I, 54th Massachusetts Infantry, 1863. (The Gilder Lehrman Institute, GLC03027). From the traveling exhibition *Civil War 150: Exploring the War and its Meaning Through the Words of Those Who Lived It*. Courtesy, Gilder Lehrman Institute. www.gilderlehrman.org/programs-exhibitions/civil-war-150

January 28 to February 18

KAPOLEI PUBLIC LIBRARY, Kapolei, HI

Civil War 150: Exploring the War and its Meaning Through the Words of Those Who Lived It

Traveling.

FEBRUARY

February 2 to April 28

HEINZ HISTORY CENTER, Pittsburgh, PA

1968: The Year that Rocked America

Traveling. Organized by the Minnesota Historical Society. www.the1968exhibit.org

February 6 to March 22
UNIVERSITY OF SAINT MARY, DE
PAUL LIBRARY, Leavenworth, KS
**Lincoln: The Constitution and
the Civil War**
Traveling.

February 20 to April 5
AURORA HISTORICAL SOCIETY,
Aurora, OH
**Lincoln: The Constitution and
the Civil War**
Traveling.

February 20 to April 5
BETHEL COLLEGE,
North Newton, KS
**Lincoln: The Constitution and
the Civil War**
Traveling.

February 20 to April 5
GEORGE MEMORIAL LIBRARY,
Richmond, TX
**Lincoln: The Constitution and
the Civil War**
Traveling.

February 20 to April 5
GEORGIA PERIMETER COLLEGE,
Dunwoody, GA
**Lincoln: The Constitution and
the Civil War**
Traveling.

February 20 to April 5
GETTYSBURG COLLEGE,
Gettysburg, PA
**Lincoln: The Constitution and
the Civil War**
Traveling.

February 20 to April 5
MISSOURI STATE MUSEUM,
Jefferson City, MO
**Lincoln: The Constitution and
the Civil War**
Traveling.

February 20 to April 5
PURDUE UNIVERSITY,
West Lafayette, IN
**Lincoln: The Constitution and
the Civil War**
Traveling.

February 20 to April 5
SUMTER COUNTY MUSEUM,
Sumter, SC
**Lincoln: The Constitution and
the Civil War**
Traveling.

February 25 to March 18
CANBY PUBLIC LIBRARY,
Canby, OR
**Civil War 150: Exploring the War
and its Meaning Through the
Words of Those Who Lived It**
Traveling.

February 25 to March 18
LAKEWOOD PUBLIC LIBRARY,
Lakewood, OH
**Civil War 150: Exploring the War
and its Meaning Through the
Words of Those Who Lived It**
Traveling.

February 25 to April 19
MANASSAS MUSEUM,
Manassas, VA
**From Morning to Night:
Domestic Service in the Gilded
Age South**
Traveling. Organized by the Maymont
Foundation. www.maymont.org

MARCH

March 6 to April 19
NEW BERN-CRAVEN COUNTY
PUBLIC LIBRARY, New Bern, NC
**Pride and Passion: The African
American Baseball Experience**
Traveling. Organized by the American Library
Association. www.ala.org

March 6 to April 5
CAMERON VILLAGE REGIONAL
LIBRARY, Raleigh, NC
**Manifold Greatness: The
Creation and Afterlife of the
King James Bible**
Traveling.

March 6 to April 5
MISSOURI VALLEY COLLEGE,
Marshall, MO
**Manifold Greatness: The
Creation and Afterlife of the
King James Bible**
Traveling.

March 6 to April 5
TUSCALOOSA PUBLIC LIBRARY,
Tuscaloosa, AL
**Manifold Greatness: The
Creation and Afterlife of the
King James Bible**
Traveling.

March 13 to May 3
LONG ISLAND UNIVERSITY, C.W.
POST CAMPUS, B. DAVIS
SCHWARTZ MEMORIAL LIBRARY,
Greenvale, NY
**Lincoln: The Constitution and
the Civil War**
Traveling.

March 15 to June 14
SAND GROUND HISTORICAL
MUSEUM, Staten Island, NY
Lincoln and New York
Traveling.

March 16 to September 2
NATIONAL BUILDING MUSEUM,
Washington, DC
**Palaces for the People:
Guastavino and America's Great
Public Spaces**
Traveling. Organized by the Massachusetts
Institute of Technology. www.nbm.org

March 25 to April 15
PEASE PUBLIC LIBRARY,
Plymouth, NH
**Civil War 150: Exploring the War
and its Meaning Through the
Words of Those Who Lived It**
Traveling.

March 25 to April 15
TWIN FALLS PUBLIC LIBRARY,
Twin Falls, ID
**Civil War 150: Exploring the War
and its Meaning Through the
Words of Those Who Lived It**
Traveling.

NEH ON THE ROAD

ExhibitsUSA, a national touring exhibitions program of Mid-America Arts Alliance, has partnered with nationally recognized museums to adapt NEH-supported exhibitions for smaller institutions through the *NEH on the Road* initiative. Please contact the Mid-America Arts Alliance if you would like to host any of these exhibitions. www.nehontheroad.org. Additional NEH on the Road exhibits are listed under the Ongoing Exhibitions Section.

January 28 to March 16

URSINUS COLLEGE, PHILLIP AND MURIEL BERMAN MUSEUM OF ART, Collegetown, PA

Grass Roots: African Origins of an American Art

Traveling. Based on an exhibition organized by the Museum for African Art.

January 28 to March 16

BRIGHAM CITY MUSEUM GALLERY, Brigham City, UT

Wild Land: Thomas Cole and the Birth of American Landscape Painting

Traveling. Based on a site interpretation by the Greene County Historical Society.

January 28 to March 16

WEST FLORIDA HISTORIC PRESERVATION, INC., Pensacola, FL

Our Lives, Our Stories: America's Greatest Generation

Traveling. Based on an exhibition organized by the Minnesota Historical Society.

January 28 to March 16

WILLIAM F. LAMAN PUBLIC LIBRARY, North Little Rock, AR
For All The World To See: Visual Culture and the Struggle for Civil Rights

Traveling. Based on an exhibition organized by the University of Maryland, Baltimore County.

February 2 to April 14

HEARST ART GALLERY, Moraga, CA
¡CARNAVAL!

Traveling. Based on an exhibition organized by the Museum of International Folk Art.



Medgar Evers Funeral, *Life* magazine, June 28, 1963. From the NEH on the Road traveling exhibition *For All the World to See: Visual Culture and the Struggle for Civil Rights*, 2011. Courtesy, the Mid-America Arts Alliance. Credit: E. G. Shempf.

PROGRAMS AND EVENTS

America's Music: A Film History of Our Popular Music from Blues to Bluegrass to Broadway

Upcoming public programs organized by the Tribeca Film Institute. www.ala.org/programming/americasmusic

Civil War 150: Exploring the War and its Meaning Through the Words of Those Who Lived It

Public programs organized by the Library of America. www.gilderlehrman.org/civilwar150

January 17 to January 31

E.N. ZEIGLER SOUTH CAROLINA HISTORY ROOM, FLORENCE COUNTY LIBRARY SYSTEM, Florence, SC

January 27 to February 17

HAVERFORD TOWNSHIP FREE LIBRARY, Havertown, PA

January 30 to March 6

MILANOF-SCHOCK LIBRARY, Mount Joy, PA

February 8 to February 27

TREXLER LIBRARY, MUHLENBERG COLLEGE, Allentown, PA

Music Unwound

Lecture programs organized by the Pacific Symphony.

March 28 to March 29

COMSTOCK CONCERT HALL, Louisville, KY

UPCOMING

It's a Small World After All: Global Citizenship Education for the 21st Century

Reading and discussion programs organized by Prime Time Family Reading. www.leh.org/html/primetime.html

Story Talk

Reading and discussion programs organized by the People and Stories/Gente y Cuentos, Inc. www.peopleandstories.org

BROADCASTS

JANUARY

January 8, 15, and 22 (check local listings)

American Experience: The Abolitionists

Written, produced, and directed by Rob Rapley. Co-produced by Kathryn Lord. Edited by John Chimples and Aljeron Tunsil. Executive Producer, Sharon Grimberg. www.pbs.org/wgbh/americanexperience/films/abolitionists

January 29 (check local listings)

American Experience: Henry Ford

Directed and produced by Sarah Colt. www.sarahcoltproductions.com/project/in-production-henry-ford-and-the-american-dream

January 25, February 1 and 8 (check local listings)

Shakespeare Uncovered

Produced by Richard Denton for Blakeway Productions and THIRTEEN for WNET in association with the BBC and Shakespeare's Globe Theatre. Series producer, Bill O'Donnell. Executive producers, Stephen Segaller and David Horn. www.thirteen.org/13pressroom/tca-tour/shakespeare-uncovered-w-t

ONGOING EXHIBITIONS AND WEBSITES

EAST

AVON FREE PUBLIC LIBRARY,
Avon, CT

Lincoln: The Constitution and the Civil War

Closes February 8.

Traveling. Organized by the National Constitution Center.

www.ala.org/ala/aboutala/offices/ppo/programming/lincoln/index.cfm

QUICK CENTER FOR THE ARTS,
FAIRFIELD UNIVERSITY,
Fairfield, CT

Lincoln: The Constitution and the Civil War

Closes February 8.

Traveling.

STEPPING STONES MUSEUM FOR
CHILDREN, Norwalk, CT

Native Voices: New England Tribal Families

Closes January 6.

Traveling. Organized by the Boston Children's Museum. www.bostonkids.org

INSTITUTE FOR AMERICAN INDIAN
STUDIES, Washington, CT

Interpreting the Native American Landscape:

The Long House Room

Long-term. www.iaismuseum.org

LAFAYETTE SQUARE,
Washington, DC

The Half Had Not Been Told Me: African Americans on Lafayette Square

Long-term. Organized by the National Trust for Historic Preservation.

www.whitehousehistory.org/decatur-house/african-american-tour/Default.aspx

NATIONAL BUILDING MUSEUM,
Washington, DC

House and Home

Long-term. www.nbm.org

SOLDIER'S HOME, Washington, DC

President Lincoln's Cottage at the Soldiers' Home

Long-term. Organized by the National Trust for Historic Preservation.

www.lincolncottage.org

MAINE STATE MUSEUM,
Augusta, ME

At Home in Maine

Long-term. mainestatemuseum.org

MAINE HISTORICAL SOCIETY,
Portland, ME

Maine Memory Network

Website. www.mainememory.net

MAINE HUMANITIES COUNCIL,
Portland, ME

Thoughtful Giving:

Philanthropy as

Civic Engagement

Website. www.civicroflection.org

BALTIMORE MUSEUM OF INDUSTRY,
Baltimore, MD

Garment Loft

Long-term. www.thebmi.org

BALTIMORE MUSEUM OF INDUSTRY,
Baltimore, MD

The Kids' Cannery

Long-term. www.thebmi.org

CENTER FOR ART, DESIGN AND
VISUAL CULTURE, UNIVERSITY OF
MARYLAND, BALTIMORE COUNTY,
Baltimore, MD

For All The World To See:

Visual Culture and the Struggle for Civil Rights

Closes March 10.

Traveling. Organized by the University of Maryland, Baltimore County.

www.umbc.edu/cadvc/exhibitions/foralltheworld.php

PORT DISCOVERY CHILDREN'S
MUSEUM, Baltimore, MD

Gods, Myths, and Mortals: Discover Ancient Greece

Closes January 22.

Traveling. Organized by the Children's Museum of Manhattan. www.cmom.org

WALTERS ART MUSEUM,
Baltimore, MD

Revealing the African Presence in Renaissance Europe

Closes January 21.

Traveling. www.thewalters.org

WALTERS ART MUSEUM,
Baltimore, MD

Asian Art Collections

Reinstallation. www.thewalters.org

WALTERS ART MUSEUM,
Baltimore, MD

Wondrous Journeys: The Walters Collection from Egyptian Tombs to Medieval Castles

Reinstallation. www.thewalters.org

ST. MARY'S CITY, VAN SWERINGEN
SITE, St. Mary's City, MD

Van Sweringen

Archaeological Site

Site interpretation. Organized by the Historic St. Mary's City Commission.

www.stmaryscity.org

BOSTON CHILDREN'S MUSEUM,
Boston, MA

Boston Black: A City Connects

Long-term. www.bostonkids.org

BOSTON PUBLIC LIBRARY,
Boston, MA

Palaces for the People:

Guastavino and America's Great Public Spaces

Closes February 24.

Traveling. Organized by the Massachusetts Institute of Technology. www.bpl.org

COMMONWEALTH MUSEUM,
Boston, MA

Our Common Wealth:

The Massachusetts

Experiment in Democracy

Long-term. Organized by the Friends of the Commonwealth Museum.

www.sec.state.ma.us/mus/museum/index.htm

USS CONSTITUTION MUSEUM,
Boston, MA

All Hands on Deck: A Sailor's Life in 1812

Long-term. Organized by the USS Constitution Museum Foundation, Inc.

www.usconstitutionmuseum.org

HARVARD UNIVERSITY,
Cambridge, MA

DoHistory

Website. www.dohistory.org

MOUNT AUBURN CEMETERY,
Cambridge, MA

Mount Auburn Cemetery: A New American Landscape

Long-term. Organized by the Friends of Mount
Auburn Cemetery. www.mountauburn.org

CONCORD MUSEUM, Concord, MA
**"Why Concord?" The History of
Concord, Massachusetts**

Long-term. www.concordmuseum.org

POCUMTUCK VALLEY MEMORIAL
ASSOCIATION, Deerfield, MA

Raid on Deerfield: The Many Stories of 1704

Website. www.1704.deerfield.history.museum

MARTHA'S VINEYARD MUSEUM,
Edgartown, MA

Laura Jernegan: Girl on a Whaleship

Website. www.girlonawhaleship.org

HOLYOKE HERITAGE STATE PARK,
CHILDREN'S MUSEUM AT
HOLYOKE, WISTARIAHURST
MUSEUM, Holyoke, MA

Creating Holyoke: Immigrants' and Migrants' Search for Community

Site interpretation. Organized by the
Wistariahurst Museum/City of Holyoke.
www.creatingholyokey.org

ARNOLD ARBORETUM OF
HARVARD UNIVERSITY,
Jamaica Plain, MA

Science in the Pleasure Ground: An Exploration of Arboretum History

Long-term. www.arboretum.harvard.edu

NEW BEDFORD WHALING
MUSEUM, New Bedford, MA
**From Pursuit to Preservation:
The Global Story of Whales
and Whaling**

Long-term.

www.whalingmuseum.org/exhibits/pursuit.html

HANCOCK SHAKER VILLAGE,
Pittsfield, MA

Audio Tour

Site interpretation.
www.hancockshakervillage.org

PLIMOTH PLANTATION,
Plymouth, MA

Thanksgiving: Memory, Myth, and Meaning

Long-term. www.plimoth.org

SPRINGFIELD TECHNICAL
COMMUNITY COLLEGE,
Springfield, MA

Shays' Rebellion and the Making of a Nation: From Revolution to Constitution

Website. www.shaysrebellion.stcc.edu

OLD STURBRIDGE VILLAGE,
Sturbridge, MA

Back to Our Roots: A New Vision of New England Farming and Rural Life

Site interpretation. www.osv.org

MUSEUM OF NEW HAMPSHIRE
HISTORY, Concord, NH
**New Hampshire Through
Many Eyes**

Long-term. Organized by the New Hampshire
Historical Society. www.nhhistory.org

STRAWBERRY BANKE,
Portsmouth, NH

Becoming Americans: The Shapiro Story, 1898–1928

Long-term. www.strawberrybanke.org

STRAWBERRY BANKE,
Portsmouth, NH
**Crossroads of a Neighborhood
in Change: The Corner
Grocery Store at Strawberry
Banke During WWII**

Long-term. www.strawberrybanke.org

NEWARK MUSEUM, Newark, NJ
Picturing America

Reinstallation. www.newarkmuseum.org

NEW YORK STATE MUSEUM,
Albany, NY

A Mohawk-Iroquois Village

Long-term. www.nysm.nysed.gov

MONTGOMERY PLACE,
Annandale-on-Hudson, NY
**American Arcadia: People,
Landscape, and Nature at
Montgomery Place**

Site interpretation. Organized by Historic
Hudson Valley.

www.hudsonvalley.org/content/view/16/46

BROOKLYN CHILDREN'S MUSEUM,
Brooklyn, NY

World Brooklyn

Long-term. www.bchildmus.org

BROOKLYN HISTORICAL SOCIETY,
Brooklyn, NY

Crossing Borders, Bridging Generations: A Study of Mixed- Heritage Families in Brooklyn

Website. www.cbbg.brooklynhistory.org

BROOKLYN MUSEUM OF ART,
Brooklyn, NY

Egypt Reborn: Art for Eternity

Reinstallation. www.brooklynart.org

BROOKLYN NAVY YARD,
Brooklyn, NY

Brooklyn Navy Yard: Past, Present, and Future

Long-term. Organized by the Brooklyn Navy
Yard Development Corporation.
www.bldg92.com

THOMAS COLE HOUSE,
Catskill, NY

The Home and Studio of Thomas Cole, Founder of the Hudson River School of Art

Long-term. Organized by the Greene County
Historical Society. www.thomascole.org

FENIMORE ART MUSEUM,
Cooperstown, NY

Mohawk Bark House

Long-term. Organized by the Farmers'
Museum. www.fenimoreartmuseum.org

FENIMORE ART MUSEUM,
Cooperstown, NY

Seneca Log House

Long-term. Organized by the Farmers'
Museum. www.farmersmuseum.org

STE. MARIE DE GANNENTAHA
LIVING HISTORY MUSEUM,
Liverpool, NY
**Sainte Marie Among the
Iroquois**

Long-term. Organized by the Office of
Museums, Onondaga County Parks.
www.onondagacountyparks.com

ELDRIDGE STREET SYNAGOGUE,
New York, NY

Museum at Eldridge Street

Site interpretation. Organized by the Eldridge
Street Project. www.eldridgestreet.org

ELLIS ISLAND, New York, NY

**Future in the Balance:
Immigration, Public Health, and
the Ellis Island Hospitals**

Long-term. Organized by the Save Ellis Island,
Inc. www.saveellisland.org

INSTITUTE FOR THE STUDY OF THE
ANCIENT WORLD, NEW YORK
UNIVERSITY, New York, NY

**Echoes of the Past: The Buddhist
Cave Temples of Xiangtangshan**

Closes January 6.

Traveling. Organized by the Smart Museum of
Art, University of Chicago.
[smartmuseum.uchicago.edu/exhibitions/
echoes-of-the-past](http://smartmuseum.uchicago.edu/exhibitions/echoes-of-the-past)

LOWER EAST SIDE TENEMENT
MUSEUM, New York, NY

**Piecing It Together: Immigrants
in the Garment Industry**

Long-term. www.tenement.org

LOWER EAST SIDE TENEMENT
MUSEUM, New York, NY

Shop Life

Long-term. www.tenement.org

LOWER EAST SIDE TENEMENT
MUSEUM, New York, NY

1863 Tenement House Tour

Long-term. www.tenement.org

MOUNT VERNON HOTEL MUSEUM
& GARDEN, New York, NY

**Reinterpretation of the Abigail
Adams Smith Museum as the
Mount Vernon Hotel (1826–1833)**

Reinstallation. Organized by the Colonial
Dames of America. www.mvhm.org

MUSEUM OF THE CITY OF NEW
YORK, New York, NY

**Designing Tomorrow: America's
World's Fairs of the 1930s**

Closes March 31.

Traveling. Organized by the National Building
Museum. www.nbm.org

NEW YORK BOTANICAL GARDEN,
New York, NY

**Nature and Culture in the
Garden**

Long-term. www.nybg.org

WNET.ORG, New York, NY

**Mission US: A Revolutionary
Way to Learn History**

Website. www.mission-us.org

POUGHKEEPSIE PUBLIC LIBRARY,
Poughkeepsie, NY

**Pride and Passion: The African
American Baseball Experience**

Closes February 28.

Traveling. Organized by the American Library
Association. www.ala.org

ROCHESTER MUSEUM AND SCIENCE
CENTER, Rochester, NY

Expedition Earth

Reinstallation. www.rmssc.org

PHILIPSBURG MANOR, Sleepy
Hollow, NY

Philipsburg Manor

Site interpretation. Organized by the Historic
Hudson Valley. www.hudsonvalley.org

LONG ISLAND MUSEUM OF
AMERICAN ART, HISTORY, AND
CARRIAGES, Stony Brook, NY

**Going Places: How Horse-Drawn
Vehicles Shaped American Life**

Long-term. www.longislandmuseum.org

WITF, INC., Harrisburg, PA

ExplorePAHistory.com

Website. www.explorepahistory.com

JOSEPH PRIESTLEY HOME,
Northumberland, PA

**Joseph Priestley: Reason, Order,
and Plainness**

Site interpretation. Organized by the Friends
of Joseph Priestley Home.
www.josephpriestleyhouse.org

INDEPENDENCE SEAPORT MUSEUM,
Philadelphia, PA

Home Port Philadelphia

Long-term. www.phillyseaport.org

NATIONAL CONSTITUTION
CENTER, Philadelphia, PA

**American Spirits: The Rise and
Fall of Prohibition**

Closes April 28.

Traveling. constitutioncenter.org

PHILADELPHIA MUSEUM OF ART,
Philadelphia, PA

European Collections

Reinstallation. www.philamuseum.org

PHILADELPHIA OUTDOOR
SCULPTURE SITES, Philadelphia, PA

Museum Without Walls

Audio program. Organized by the Association
for Public Art. associationforpublicart.org

PLEASE TOUCH MUSEUM®,
Philadelphia, PA

**Centennial Exploration
Exhibition**

Long-term. www.pleasetouchmuseum.org

PLEASE TOUCH MUSEUM®,
Philadelphia, PA

Wonderland

Long-term. www.pleasetouchmuseum.org

UNIVERSITY OF PENNSYLVANIA
MUSEUM OF ARCHAEOLOGY
AND ANTHROPOLOGY,
Philadelphia, PA

**Living in Balance: The Universe
of the Hopi, Zuni, Navajo,
and Apache**

Long-term. www.museum.upenn.edu

UNIVERSITY OF PENNSYLVANIA
MUSEUM OF ARCHAEOLOGY
AND ANTHROPOLOGY,
Philadelphia, PA

Maya 2012: Lords of Time

Closes January 13.

Traveling. Organized by the University of
Pennsylvania. www.penn.museum

CARNEGIE MUSEUM OF NATURAL
HISTORY, Pittsburgh, PA

**Alcoa Foundation Hall of
American Indians**

Long-term. www.carnegiemnh.org

CARNEGIE MUSEUM OF NATURAL HISTORY, Pittsburgh, PA
Walton Hall of Ancient Egypt
Long-term. www.carnegiemn.org

SENATOR JOHN HEINZ PITTSBURGH REGIONAL HISTORY CENTER, Pittsburgh, PA
Pittsburgh: A Tradition of Innovation
Long-term. www.pghhistory.org

MUSEUM OF NEWPORT HISTORY, Newport, RI
Museum of Newport History at the Brick Market
Long-term. Organized by the Newport Historical Society and the Museum of Newport History. www.newporthistorical.org

MUSEUM OF WORK AND CULTURE, Woonsocket, RI
La Survivance: French-Canadians in Woonsocket, Rhode Island
Long-term. Organized by the Rhode Island Historical Society. www.rihs.org

MIDWEST

ADLER PLANETARIUM & ASTRONOMY MUSEUM, Chicago, IL
Bringing the Heavens to Earth: Cultural Astronomies Around the World
Long-term. www.adlerplanetarium.org

ADLER PLANETARIUM & ASTRONOMY MUSEUM, Chicago, IL
The Universe in Your Hands
Long-term. www.adlerplanetarium.org

FIELD MUSEUM, Chicago, IL
Africa
Long-term. www.fieldmuseum.org

FIELD MUSEUM, Chicago, IL
Peoples of the Pacific: Traveling the Pacific and Pacific Spirits
Long-term. www.fieldmuseum.org

HULL-HOUSE MUSEUM, Chicago, IL
Redefining Democracy: Jane Addams and the Hull-House Settlement
Reinstallation. Organized by the University of Illinois at Chicago. www.uic.edu/jaddams/hull

NEWBERRY LIBRARY, Chicago, IL
The Indians of the Midwest
Website. www.newberry.org

ILLINOIS STATE MUSEUM, Springfield, IL
At Home in the Heartland
Long-term. www.museum.state.il.us

CONNER PRAIRIE MUSEUM, Fishers, IN
1863 Civil War Journey: Raid on Indiana
Long-term. civilwar.connerprairie.org

CHILDREN'S MUSEUM OF INDIANAPOLIS, Indianapolis, IN
The Power of Children: Making a Difference
Long-term. www.childrensmuseum.org/themuseum/powerochildren/html/index.html

MISSISSIPPI RIVER MUSEUM & AQUARIUM, Dubuque, IA
Make Me a River: Visions and Revisions of the Upper Mississippi
Long-term. Organized by the Mississippi River Museum. www.mississippirivermuseum.com

MISSISSIPPI RIVER MUSEUM AND AQUARIUM, Dubuque, IA
National Mississippi River Museum and Aquarium
Long-term. Organized by the Dubuque County Historical Society. www.mississippirivermuseum.com

OELWEIN PUBLIC LIBRARY, Oelwein, IA
Civil War 150: Exploring the War and its Meaning Through the Words of Those Who Lived It
Closes January 21.
Traveling. Organized by the Library of America. www.gilderlehrman.org/programs-exhibitions/civil-war-150

WATERLOO PUBLIC LIBRARY, Waterloo, IA
Lincoln: The Constitution and the Civil War
Closes January 25.
Traveling.

KANSAS AFRICAN AMERICAN MUSEUM, Wichita, KS
For All The World To See: Visual Culture and the Struggle for Civil Rights
Closes January 7.
Traveling. Organized by ExhibitsUSA. Based on an exhibition organized by the University of Maryland, Baltimore County. www.nehontheroad.org

CLINTON-MACOMB PUBLIC LIBRARY, Clinton Township, MI
Lincoln: The Constitution and the Civil War
Closes February 8.
Traveling.

THE HENRY FORD MUSEUM, Dearborn, MI
Made in America: The History of the American Industrial System
Long-term. www.hfmgv.org

THE HENRY FORD MUSEUM, Dearborn, MI
Heroes of the Sky: Adventures in Early Flight
Long-term. www.hfmgv.org

THE HENRY FORD MUSEUM, Dearborn, MI
Your Place in Time: 20th-Century America
Long-term. www.thehenryford.org/exhibits/ypit/index.html

DETROIT INSTITUTE OF ARTS, Detroit, MI
Great Art: New Start
Reinstallation. www.dia.org

GRAND RAPIDS PUBLIC MUSEUM, Grand Rapids, MI
Newcomers: The People of This Place
Long-term. www.grmuseum.org

GRAND RAPIDS PUBLIC MUSEUM, Grand Rapids, MI
Furniture City
Long-term. www.grmuseum.org

GRAND RAPIDS PUBLIC MUSEUM, Grand Rapids, MI
Anishinabek: The People of This Place
Long-term. www.grmuseum.org

VERONA PUBLIC LIBRARY,
Verona, MI

**Manifold Greatness: The
Creation and Afterlife of the
King James Bible**

Closes January 11.

Traveling. Organized by the Folger
Shakespeare Library and the American Library
Association. www.ala.org

INTERNATIONAL WOLF CENTER,
Ely, MN

**Wolves and Humans:
Coexistence, Competition,
and Conflict**

Long-term. Organized by the Science Museum
of Minnesota. www.wolf.org

MILL CITY MUSEUM,
Minneapolis, MN

Mill City Museum

Long-term. Organized by the Minnesota
Historical Society. www.millcitymuseum.org

MILLE LACS INDIAN MUSEUM,
Onamia, MN

**Learn About Our Past: The Story
of the Mille Lacs Band of Ojibwe**

Long-term. Organized by the Minnesota
Historical Society. www.mnhs.org

LANDMARK CENTER, St. Paul, MN

Uncle Sam Worked Here

Long-term. Organized by Minnesota
Landmarks. www.landmarkcenter.org

MINNESOTA HISTORICAL SOCIETY,
St. Paul, MN

Open House

Long-term. www.mnhs.org

MINNESOTA HISTORY CENTER,
St. Paul, MN

**Minnesota's Greatest
Generation: The Depression, The
War, The Boom**

Long-term. Organized by the Minnesota
Historical Society.
www.mnhs.org/people/mnngg/index.htm

UNIVERSITY OF NEBRASKA, BOARD
OF REGENTS, Lincoln, NE

**The Journals of the Lewis and
Clark Expedition Online Edition**

Website. lewisandclarkjournals.unl.edu

CINCINNATI ART MUSEUM,
Cincinnati, OH

**The Cincinnati Wing: The Story
of Art in the Queen City**

Long-term. www.cincinnatiartmuseum.org

CLEVELAND MUSEUM OF ART,
Cleveland, OH

**Wari: Lords of the
Ancient Andes**

Closes January 6.

Traveling. www.clevelandart.org

KENT STATE UNIVERSITY, VISITORS
CENTER, Kent, OH

**Making Meaning of May 4th:
The Kent State Shootings in
American History**

Long-term. Organized by Kent State
University. www.kent.edu

OHIO STATE UNIVERSITY,
Newark, OH

**The Ancient Ohio Trail: A
Media-Enhanced Cultural
Heritage Experience**

Website. Organized by Ohio State University
Research Foundation.
www.ancientohiotrail.org

SOUTH DAKOTA STATE HISTORICAL
SOCIETY, CULTURAL HERITAGE
CENTER, Pierre, SD

Proving Up

Long-term. history.sd.gov/museum

LAWRENCE UNIVERSITY, SEELEY G.
MUDD LIBRARY, Appleton, WI

**Lincoln: The Constitution and
the Civil War**

Closes February 8.

Traveling.

CHIPPEWA VALLEY MUSEUM,
Eau Claire, WI

**Settlement and Survival:
Building Towns in the
Chippewa Valley, 1850-1925**

Long-term. www.cvmuseum.com

CHIPPEWA VALLEY MUSEUM,
Eau Claire, WI

**Farm Life: A Century of
Change for Farm Families
and Their Neighbors**

Long-term. www.cvmuseum.com

MILWAUKEE PUBLIC MUSEUM,
Milwaukee, WI

A Tribute to Survival

Long-term. www.mpm.edu

SOUTH

CARL ELLIOTT HOUSE MUSEUM,
Jasper, AL

Carl Elliott House

Long-term. Organized by the Beville State
Community College. www.bscc.edu/elliott

FLORIDA MUSEUM OF NATURAL
HISTORY, Gainesville, FL

**South Florida: People and
Environments**

Long-term. Organized by the University of
Florida. www.flmnh.ufl.edu

MISSION SAN LUIS, Tallahassee, FL

**San Luis de Apalachee:
Interpretation of a 17th-Century
Spanish Mission**

Long-term. Organized by the Florida Division
of Historical Resources.
www.missionsanluis.org

ATLANTA HISTORY CENTER,
Atlanta, GA

**Metropolitan Frontiers: Atlanta,
1835-2000**

Long-term. www.atlhist.org

ATLANTA HISTORY CENTER,
Atlanta, GA

**Turning Point: The American
Civil War**

Long-term. www.atlhist.org

GEORGIA INSTITUTE OF
TECHNOLOGY, Atlanta, GA

**Lincoln: The Constitution and
the Civil War**

Closes February 8.

Traveling.

JESSAMINE COUNTY PUBLIC
LIBRARY, Nicholasville, KY

**Civil War 150: Exploring the War
and its Meaning Through the
Words of Those Who Lived It**

Closes January 21.

Traveling.

WEST BATON ROUGE MUSEUM,
Baton Rouge, LA
**From Morning to Night:
Domestic Service in the Gilded
Age South**

Closes February 2.

Traveling. Organized by the Maymont
Foundation. www.maymont.org

WEST BATON ROUGE MUSEUM,
Port Allen, LA
**Our Lives, Our Stories:
America's Greatest Generation**

Closes January 7.

Traveling. Organized by ExhibitsUSA. Based
on an exhibition organized by the Minnesota
Historical Society. www.nehontheroad.org

SMITH ROBERTSON MUSEUM &
CULTURAL CENTER, Jackson, MS
**Field to Factory: Afro-American
Migration, 1915-1940**

Long-term.

[www.jacksonms.gov/visitors/museums/smit
hrobertson](http://www.jacksonms.gov/visitors/museums/smithrobertson)

LAUREN ROGERS MUSEUM OF ART,
Laurel, MS
**By Native Hands: Woven
Treasures from the Lauren
Rogers Museum of Art**

Reinstallation. www.lrma.org

UNIVERSITY MUSEUM AT THE
UNIVERSITY OF MISSISSIPPI,
Oxford, MS
**Grass Roots: African Origins of
an American Art**

Closes January 7.

Traveling. Organized by ExhibitsUSA. Based
on an exhibition organized by the Museum for
African Art. www.nehontheroad.org

TRANSYLVANIA COUNTY LIBRARY,
Brevard, NC
**Manifold Greatness: The
Creation and Afterlife of the
King James Bible**

Closes January 11.

Traveling. Organized by the Folger
Shakespeare Library and the American Library
Association. www.ala.org

LEVINE MUSEUM OF THE NEW
SOUTH, Charlotte, NC
**Cotton Fields to Skyscrapers:
Charlotte and the Carolina
Piedmont in the New South**

Long-term. www.museumofthenewsouth.org

MUSEUM OF THE CHEROKEE
INDIAN, Cherokee, NC
**Emissaries of Peace: The 1762
Cherokee/British Delegations
Traveling.**

www.cherokeemuseum.org

PENN CENTER NATIONAL
HISTORIC LANDMARK,
St. Helena Island, SC
**Lincoln: The Constitution and
the Civil War**

Closes February 8.

Traveling.

HERMITAGE, Hermitage, TN
**The Hermitage, Andrew Jackson,
and a Changing America**

Site interpretation. www.thehermitage.com

EAST TENNESSEE HISTORICAL
SOCIETY, Knoxville, TN
**Voices of the Land: The People
of East Tennessee**

Long-term. www.east-tennessee-history.org

MONTICELLO, Charlottesville, VA
**Mulberry Row and the
Landscape of Slavery at
Jefferson's Monticello**

Site interpretation. Organized by the Thomas
Jefferson Memorial Foundation.

www.monticello.org

MONTICELLO MUSEUM,
Charlottesville, VA
**Domestic Life and the
Plantation Community at
Jefferson's Monticello**

Site interpretation. Organized by the Thomas
Jefferson Memorial Foundation.

www.monticello.org

MONTICELLO MUSEUM,
Charlottesville, VA
To Try All Things

Long-term. Organized by the Thomas Jefferson
Memorial Foundation. www.monticello.org

HAMPTON HISTORY MUSEUM,
Hampton, VA
**An American Turning Point:
The Civil War in Virginia:**

Surviving War

Closes April 28.

Traveling. Organized by the Virginia
Sesquicentennial of the American Civil War
Commission. www.virginiacivilwar.org

MAYMONT, Richmond, VA
**In Service and Beyond:
Domestic Work and Life in a
Gilded Age Mansion**

Long-term. Organized by the Maymont
Foundation. www.maymont.org

VALENTINE RICHMOND HISTORY
CENTER, Richmond, VA
**Creating History: The
Valentine Family and the
Valentine Museum**

Long-term. www.richmondhistorycenter.com

VIRGINIA HISTORICAL SOCIETY,
Richmond, VA
**An American Turning Point: The
Civil War in Virginia**

Website. Organized by the Virginia
Sesquicentennial of the American Civil War
Commission.

www.vahistorical.org/civilwar/introductionhtm

COLONIAL WILLIAMSBURG,
Williamsburg, VA
**From Subjects to Citizens:
Williamsburg and the
American Revolution**

Website. www.ouramericanrevolution.org

SOUTHWEST

BISBEE MINING & HISTORICAL
MUSEUM, Bisbee, AZ
**Bisbee: Urban Outpost on
the Frontier**

Long-term. www.bisbeemuseum.org

FORT APACHE HISTORIC PARK,
Fort Apache, AZ
**Transitions in the Apache World:
The Fort Apache Legacy**

Long-term. Organized by the White Mountain
Apache Tribe.

www.wmonline.com/attract/ftapache.htm

DESERT BOTANICAL GARDEN,
Phoenix, AZ
**Plants and People of the
Sonoran Desert**

Long-term. www.dbg.org

HEARD MUSEUM, Phoenix, AZ
**Remembering Our Indian
School Days: The Boarding
School Experience**

Long-term. www.heard.org

ARIZONA STATE MUSEUM,
Tucson, AZ

**Paths of Life: American Indians
of the Southwest**

Long-term. Organized by the University of
Arizona. www.statemuseum.arizona.edu

MAXWELL MUSEUM OF
ANTHROPOLOGY,
Albuquerque, NM

Ancestors

Long-term. www.unm.edu/~maxwell

MAXWELL MUSEUM OF
ANTHROPOLOGY,
Albuquerque, NM

People of the Southwest

Long-term. www.unm.edu/~maxwell

MUSEUM OF INDIAN ARTS AND
CULTURE, Santa Fe, NM

Here, Now, and Always

Long-term. Organized by the Museum of New
Mexico Foundation. www.miaclab.org

EL CAMINO REAL INTERNATIONAL
HERITAGE CENTER, Socorro, NM

**Traveling el Camino Real:
Caminando el Camino Real**

Long-term. Organized by the Museum of New
Mexico. www.nmmonuments.org

A:SHIWI A:WAN MUSEUM AND
HERITAGE CENTER, Zuni, NM

Hawikku: Echoes from Our Past

Long-term. www.ashiwi.org/enterprise.aspx

CHEROKEE STRIP LAND RUSH
MUSEUM, Enid, OK

**Farm Life: A Century of Change
for Farm Families and Their
Neighbors**

Closes January 7.

Traveling. Organized by ExhibitsUSA. Based
on an exhibition organized by the Chippewa
Valley Museum. www.nehontheroad.org

OKLAHOMA HISTORY CENTER,
Oklahoma City, OK

We Are Who We Were

Long-term. Organized by the Oklahoma
Historical Society. www.okhistory.org

MUSEUM OF FINE ARTS, HOUSTON,
Houston, TX

**Henry Ossawa Tanner:
Modern Spirit**

Closes January 13.

Traveling. Organized by the Pennsylvania
Academy of Fine Arts. www.pafa.org

WEST

ANCHORAGE MUSEUM OF HISTORY
AND ART, Anchorage, AK

Alaska Gallery

Reinstallation. Organized by the Anchorage
Museum Association.

www.anchoragemuseum.org

UNIVERSITY OF ALASKA MUSEUM,
Fairbanks, AK

Rose Berry Alaskan Art Gallery

Reinstallation. www.uaf.edu/museum

PRATT MUSEUM, Homer, AK

**Kachemak Bay, Alaska: An
Exploration of People and Place**

Reinstallation. www.prattmuseum.org

FORT ROSS STATE HISTORIC PARK,
Jenner, CA

**Rotchev House Museum Exhibit
at Fort Ross, California**

Long-term. Organized by the Fort Ross
Interpretive Association.

www.fortrossinterpretive.org

FOWLER MUSEUM AT UCLA,
Los Angeles, CA

**Intersections: World Arts,
Local Lives**

Reinstallation. www.fowler.ucla.edu

OAKLAND MUSEUM OF
CALIFORNIA, Oakland, CA

**Coming to California: The
Gallery of California History**

Long-term. Organized by the Oakland
Museum of California Foundation.

www.museumca.org

PERALTA HACIENDA HISTORICAL
PARK, Oakland, CA

**Every Human Being
Makes History**

Site interpretation. Organized by the Friends
of Peralta Hacienda Historical Park.

www.peraltahacienda.org

MUSEUM OF HISTORY AND ART,
ONTARIO, Ontario, CA

Road Ways

Long-term.

www.ci.ontario.ca.us/index.cfm/1605

SAN BERNARDINO PUBLIC LIBRARY,
San Bernardino, CA

**Lincoln: The Constitution and
the Civil War**

Closes February 8.

Traveling.

ASIAN ART MUSEUM OF SAN
FRANCISCO, San Francisco, CA

Permanent Collections Galleries

Long-term. www.asianart.org

COIT TOWER, RINCON ANNEX,
CITY COLLEGE, MARINE MARITIME
MUSEUM, San Francisco, CA

**New Deal Murals of
San Francisco**

Walking tours. Organized by the KQED, Inc.

www.kqed.org

SONOMA COUNTY MUSEUM,
Santa Rosa, CA

**Wild Land: Thomas Cole and the
Birth of American Landscape
Painting**

Closes January 7.

Traveling. Organized by ExhibitsUSA. Based
on a site interpretation by the Greene County
Historical Society. www.nehontheroad.org

BAY AREA DISCOVERY MUSEUM,
Sausalito, CA

**Nurturing Creativity through
Arts, Science & Environment**

Long-term. www.baykidsmuseum.org

WALNUT CREEK LIBRARY,
Walnut Creek, CA

**Lincoln: The Constitution and
the Civil War**

Closes February 8.

Traveling.

DENVER ART MUSEUM,
Denver, CO

Asian Art Collection

Reinstallation. www.denverartmuseum.org

MOLLY BROWN HOUSE MUSEUM,
Denver, CO
**Molly Brown: The Biography of
a Changing Nation**
Long-term. www.mollybrown.org

ARIZONA STATE UNIVERSITY,
Grand Canyon, CO
**Nature, Culture, and History at
the Grand Canyon**
Website. grandcanyonhistory.clas.asu.edu

MONTROSE REGIONAL LIBRARY
DISTRICT, Montrose, CO
**Manifold Greatness: The
Creation and Afterlife of the
King James Bible**
Closes January 11.
Traveling. Organized by the Folger
Shakespeare Library and the American Library
Association. www.ala.org

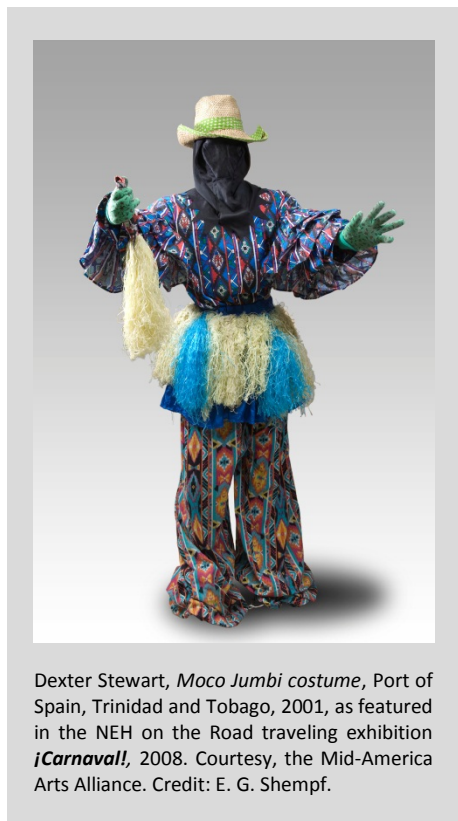
KONA COFFEE FARM,
Captain Cook, HI
**Kona Coffee Living
History Farm**
Site interpretation. Organized by the Kona
Historical Society. www.konahistorical.org

KONA HISTORIC RANCH,
Captain Cook, HI
Kona Historic Ranch and Store
Site interpretation. Organized by the Kona
Historical Society. www.konahistorical.org

C.M. RUSSELL MUSEUM,
Great Falls, MT
**The Bison: American Icon, Heart
of Plains Indian Culture**
Long-term. Organized by the Trigg C. M.
Russell Foundation. cmrussell.org

HIGH DESERT MUSEUM, Bend, OR
**By Hand Through Memory:
Native People of the
Columbia River Plateau in
the Twentieth Century**
Long-term. www.highdesertmuseum.org

HIGH DESERT MUSEUM, Bend, OR
Bison
Closes January 7.
Traveling. Organized by ExhibitsUSA. Based
on an exhibition organized by the Trigg C. M.
Russell Foundation. www.nehontheroad.org



Dexter Stewart, *Moco Jumbi costume*, Port of
Spain, Trinidad and Tobago, 2001, as featured
in the NEH on the Road traveling exhibition
¡Carnaval!, 2008. Courtesy, the Mid-America
Arts Alliance. Credit: E. G. Shempf.

OREGON MUSEUM OF SCIENCE AND
INDUSTRY, Portland, OR
More Power to You!
Long-term. www.oms.edu

BRIGHAM CITY MUSEUM AND
GALLERY, Brigham City, UT
¡CARNAVAL!
Closes January 7.
Traveling. Organized by ExhibitsUSA. Based
on an exhibition organized by the Museum of
International Folk Art. www.nehontheroad.org

UTAH MUSEUM OF NATURAL
HISTORY, Salt Lake City, UT
**Native Voices: People of
the Great Basin and
Colorado Plateau**
Long-term. umnh.utah.edu/home

BURKE MUSEUM OF NATURAL
HISTORY AND CULTURE,
UNIVERSITY OF WASHINGTON,
Seattle, WA
Pacific Voices
Long-term.
www.washington.edu/burkemuseum

PLAINS INDIAN MUSEUM,
Cody, WY
**Plains Indian Museum
Reinstallation.** Organized by the Buffalo Bill
Historical Center. www.bbhc.org

All events, exhibitions, and programs listed
are supported by grants from the
National Endowment for the Humanities,
Division of Public Programs. Please contact the
host institution for exact dates and times.
1100 Pennsylvania Avenue, NW, Room 426
Washington, DC 20506
(202) 606-8269
PublicPgms@neh.gov
For more information about NEH and its
programs, we invite you to visit our website at
www.neh.gov

NATIONAL ENDOWMENT
FOR THE HUMANITIES
WASHINGTON, D.C. 20506
OFFICIAL BUSINESS
PENALTY FOR PRIVATE USE, \$300