



Michelle Lujan Grisham
Governor

STATE OF NEW MEXICO
DEPARTMENT OF CULTURAL AFFAIRS
HISTORIC PRESERVATION DIVISION

BATAAN MEMORIAL BUILDING
407 GALISTEO STREET, SUITE 236
SANTA FE, NEW MEXICO 87501
PHONE (505) 827-6320 FAX (505) 827-6338

August 12, 2021

Ann Piesen
Federak Preservation and Environmental Officer
Office of Grants Management
National Endowment for the Humanities
400 Seventh Street, SW – Room 2026
Washington, DC 220506

Via Email: apiesen@neh.gov

Re: Georgia O'Keeffe Museum APE

Dear Ms. Piesen:

The New Mexico State Historic Preservation Office is in receipt of your August 11, 2021 email stating that the National Endowment for the Humanities has accepted the revised Area of Potential Effect (APE) for the proposed Georgia O'Keeffe Museum in Santa Fe, New Mexico. The APE was revised on July 15, 2021, after a walk of the proposed APE on July 13, 2021.

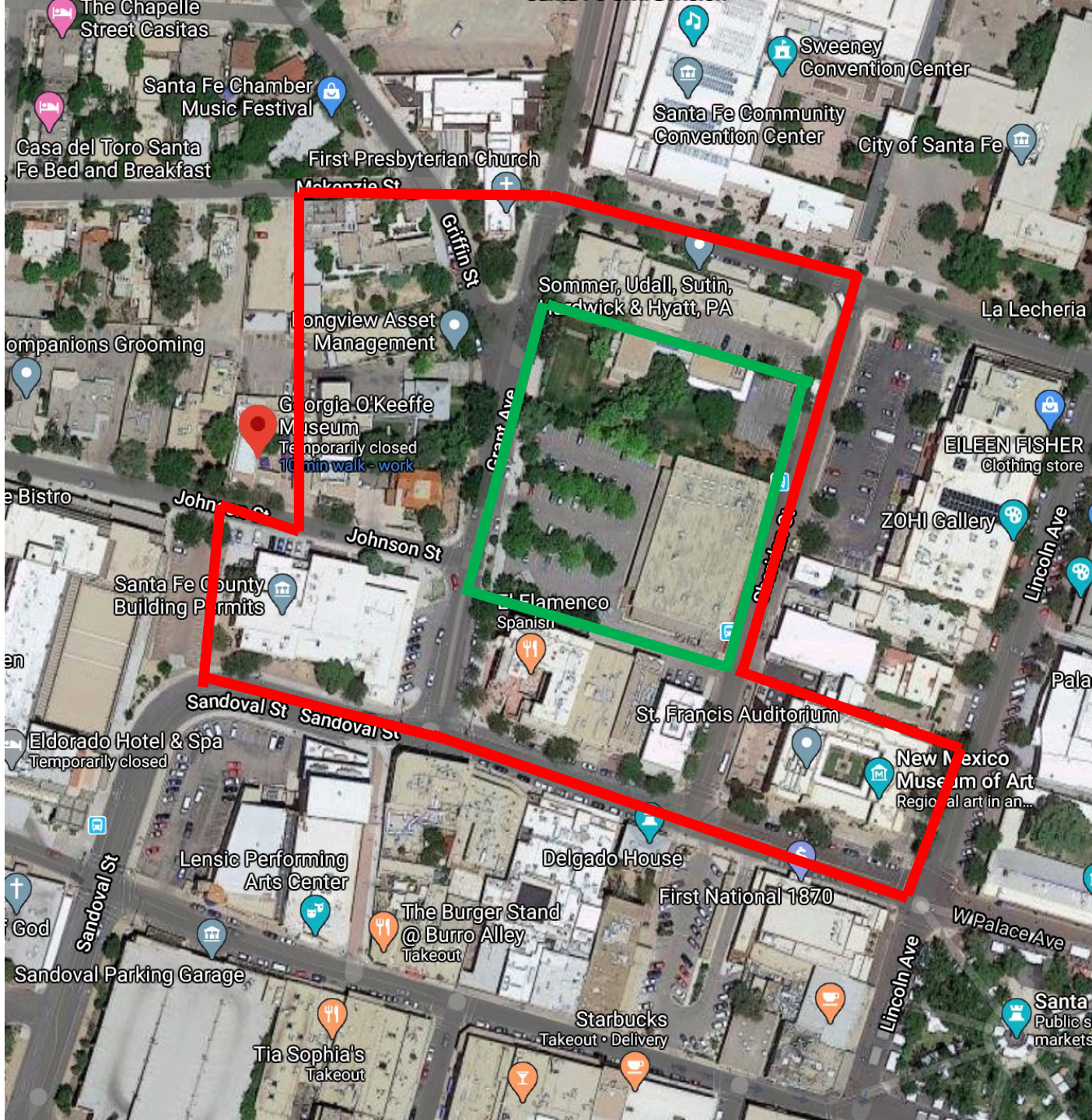
HPD concurs with the boundary of the proposed APE, as shown on the attached map. If you have any questions, please contact me at 505-827-4222 or jeff.pappas@state.nm.us.

Sincerely,

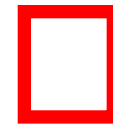
A handwritten signature in blue ink that reads "Jeff Pappas".

Jeff Pappas, Ph.D.
State Historic Preservation Officer/Director

cc: Tatiana Ausema, National Endowment for the Humanities
Eric Blinman, Office of Archaeological Studies
Michelle Ensey, HPD
Jennifer Foley, O'Keeffe Museum
Daniel Hernandez
Karla McWilliams, HPD
John Murphey
Jennifer Pedneau, O'Keeffe Museum



Project site



APE – suggested boundary by HPD

APE additions from HPD – July 15, 2021