



**EXHIBITION OPENINGS**

**JANUARY**

*January 6 to January 20*

CITY OF PETERSBURG MUSEUMS,  
Petersburg, VA

**An American Turning Point:  
The Civil War in Virginia**

**Traveling.** Organized by the Virginia  
Sesquicentennial of the American Civil War  
Commission. [www.vahistorical.org/what-you-can-see/exhibitions/traveling-exhibitions](http://www.vahistorical.org/what-you-can-see/exhibitions/traveling-exhibitions)

*January 14*

BROOKLYN HISTORICAL SOCIETY,  
WEEKSVILLE HERITAGE CENTER,  
IRONDALE CENTER, Brooklyn, NY

**In Pursuit of Freedom**

**Long-term.** [www.brooklynhistory.org](http://www.brooklynhistory.org)

*January to May*

BROWN UNIVERSITY, JOHN CARTER  
BROWN LIBRARY, Providence, RI

**Revolution!: The Atlantic  
World Reborn**

**Traveling.** Organized by the New-York  
Historical Society. [www.nyhistory.org](http://www.nyhistory.org)

*January 21 to February 4*

ISLE OF WIGHT COUNTY MUSEUM,  
Smithfield, VA

**An American Turning Point:  
The Civil War in Virginia**

**Traveling.**

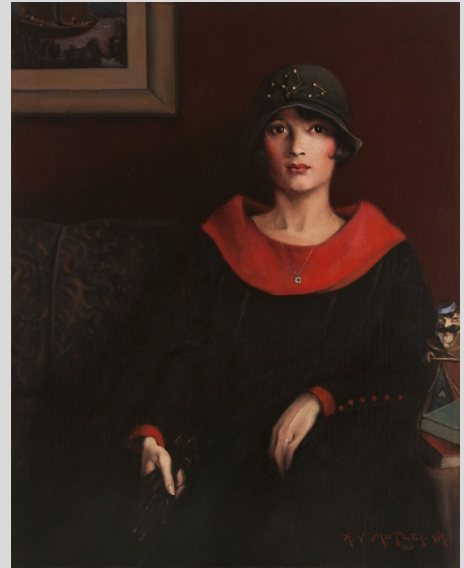
*January 25 to May 12*

MINNESOTA CHILDREN'S MUSEUM,  
St. Paul, MN

**Native Voices: New England  
Tribal Families**

**Traveling.** Organized by the Boston Children's  
Museum. [www.bostonkids.org](http://www.bostonkids.org)

Archibald J. Motley Jr., *The Octoroon Girl*, 1925. Oil on canvas, 38 x 30.25 inches (96.5 x 76.8 cm). From the exhibition **Archibald Motley: Jazz Age Modernist** at the Nasher Museum of Art, Duke University. Courtesy, Michael Rosenfeld Gallery, LLC, New York, New York. © Valerie Gerrard Browne. [www.nasher.duke.edu](http://www.nasher.duke.edu)



*January 30 to May 11*

NASHER MUSEUM OF ART, DUKE  
UNIVERSITY, Durham, NC

**Archibald Motley:  
Jazz Age Modernist**

**Traveling.** Organized by Duke University.  
[nasher.duke.edu/exhibitions/motley](http://nasher.duke.edu/exhibitions/motley)

**FEBRUARY**

*February 3 to February 24*

BROOKINGS PUBLIC LIBRARY,  
Brookings, SD

**Civil War 150: Exploring the War  
and its Meaning Through the  
Words of Those Who Lived It**

**Traveling.** Organized by the Library of  
America. [www.gilderlehrman.org/civilwar150](http://www.gilderlehrman.org/civilwar150)

*February 3 to February 24*

ELDERSBURG PUBLIC LIBRARY,  
Eldersburg, MD

**Civil War 150: Exploring the War  
and its Meaning Through the  
Words of Those Who Lived It**

**Traveling.**

*February 5 to March 21*

ALABAMA STATE UNIVERSITY,  
Montgomery, AL

**Lincoln: The Constitution and  
the Civil War**

**Traveling.** Organized by the National  
Constitution Center. [www.ala.org](http://www.ala.org)

*February 5 to March 21*

DECATUR PUBLIC LIBRARY,  
Decatur, IL

**Lincoln: The Constitution and  
the Civil War**

**Traveling.**

*February 5 to March 21*

HARRISBURG AREA COMMUNITY  
COLLEGE, Harrisburg, PA

**Lincoln: The Constitution and  
the Civil War**

**Traveling.**

February 5 to March 21

HAYS PUBLIC LIBRARY, Hays, KS

**Lincoln: The Constitution and the Civil War**

Traveling.

February 5 to March 21

INDIANA STATE UNIVERSITY,

Terre Haute, IN

**Lincoln: The Constitution and the Civil War**

Traveling.

February 5 to March 21

SCOTTSDALE PUBLIC LIBRARY,

Scottsdale, AZ

**Lincoln: The Constitution and the Civil War**

Traveling.

February 5 to March 21

UNIVERSITY OF EVANSVILLE,

Evansville, IN

**Lincoln: The Constitution and the Civil War**

Traveling.

February 5 to March 21

UNIVERSITY OF WISCONSIN,

Whitewater, WI

**Lincoln: The Constitution and the Civil War**

Traveling.

February 5 to March 21

URBANA UNIVERSITY, Urbana, OH

**Lincoln: The Constitution and the Civil War**

Traveling.

February 8 to May 4

DURHAM MUSEUM, Omaha, NE

**The 1968 Project**

Traveling. Organized by the Minnesota Historical Society. [www.the1968exhibit.org](http://www.the1968exhibit.org)

February 16 to May 18

ALBUQUERQUE MUSEUM OF ART

AND HISTORY, Albuquerque, NM

**Behind Closed Doors:**

**Power and Privilege at**

**Home in Spanish America**

Traveling. Organized by the Brooklyn Museum of Art. [www.brooklynmuseum.org](http://www.brooklynmuseum.org)

## MARCH

March 1

NATIONAL CIVIL RIGHTS MUSEUM,  
Memphis, TN

**Lorraine Motel Exhibits**

Long-term. [www.civilrightsmuseum.org](http://www.civilrightsmuseum.org)

March 2 to May 26

PHILADELPHIA MUSEUM OF ART,

Philadelphia, PA

**The Last Dynasty: Arts and Culture of Joseon Korea, 1392-1910**

Traveling.

[www.philamuseum.org/exhibitions/795.html](http://www.philamuseum.org/exhibitions/795.html)

March 3 to March 24

RHODE ISLAND CIVIL WAR

SESQUICENTENNIAL

COMMEMORATION COMMISSION,

Hope Valley, RI

**Civil War 150: Exploring the War and its Meaning Through the Words of Those Who Lived It**

Traveling.

March 3 to March 24

TARRANT COUNTY COLLEGE

DISTRICT, SOUTHEAST CAMPUS

LIBRARY, Arlington, TX

**Civil War 150: Exploring the War and its Meaning Through the Words of Those Who Lived It**

Traveling.

March 10 to March 24

PETERSBURG PUBLIC LIBRARY,

Petersburg, VA

**An American Turning Point:**

**The Civil War in Virginia**

Traveling.

March 13 to October 26

NATIONAL MUSEUM OF AMERICAN

JEWISH HISTORY, Philadelphia, PA

**Chasing Dreams: Baseball and**

**Becoming American**

Traveling. [www.nmajh.org](http://www.nmajh.org)

March 31 to April 21

COKER COLLEGE, Hartsville, SC

**Civil War 150: Exploring the War and its Meaning Through the Words of Those Who Lived It**

Traveling.

March 31 to April 21

SCOTTSDALE PUBLIC LIBRARY

SYSTEM, CIVIC CENTER LIBRARY,

Scottsdale, AZ

**Civil War 150: Exploring the War and its Meaning Through the Words of Those Who Lived It**

Traveling.

## NEH ON THE ROAD

ExhibitsUSA, a national touring exhibitions program of Mid-America Arts Alliance, has partnered with nationally recognized museums to adapt NEH-supported exhibitions for smaller institutions through the *NEH on the Road* initiative. Please contact the Mid-America Arts Alliance if you would like to host any of these exhibitions.

Additional NEH on the Road exhibits are listed under the Ongoing Exhibitions Section.

[www.nehontheroad.org](http://www.nehontheroad.org).

January 28 to March 16

WILLIAM D. CANNON ART

GALLERY, Carlsbad, CA

**Our Lives, Our Stories:**

**America's Greatest Generation**

Traveling. Based on an exhibition organized by the Minnesota Historical Society.

January 28 to March 16

UNIVERSITY OF MISSISSIPPI

MUSEUM, University, MS

**House and Home**

Traveling. Based on an exhibition organized by the National Building Museum.

January 28 to March 16

UNIVERSITY OF TEXAS,

San Antonio, TX

**For All The World To See:**

**Visual Culture and the Struggle for Civil Rights**

Traveling. Based on an exhibition organized by the University of Maryland, Baltimore County.

January 28 to March 16

WORCESTER CENTER FOR CRAFTS,

Worcester, MA

**¡CARNAVAL!**

Traveling. Based on an exhibition organized by the Museum of International Folk Art.

January 28 to March 16  
BRIGHAM CITY MUSEUM GALLERY,  
Brigham City, UT

### **Bison**

**Traveling.** Based on an exhibition organized by the Trigg C. M. Russell Foundation.

## PROGRAMS AND EVENTS

### **Created Equal: America's Civil Rights Struggle**

*Late winter*

"Created Equal: America's Civil Rights Struggle" uses the power of documentary films to encourage public conversations about the changing meanings of freedom and equality in America. The four outstanding documentary films that are the centerpiece of this project—The Abolitionists, Slavery by Another Name, Freedom Riders and The Loving Story—tell the remarkable stories of individuals who challenged the social and legal status quo, from slavery to segregation. Film screenings funded by NEH will be offered at 473 communities across the nation. "Created Equal" is part of the NEH *Bridging Cultures* initiative, produced in partnership with the Gilder Lehrman Institute of American History.  
[www.createdequal.neh.gov](http://www.createdequal.neh.gov)

### **America's Music: A Film History of Our Popular Music from Blues to Bluegrass to Broadway**

Public programs organized by the Tribeca Film Institute.  
[americasmusic.tribecafilminstitute.org](http://americasmusic.tribecafilminstitute.org)

January 1 to March 1

HILL HOUSE ASSOCIATION,  
Pittsburgh, PA

January 9 to February 13

VINEYARD HAVEN PUBLIC  
LIBRARY, Vineyard, MA

January 13 to March 23

AURORA UNIVERSITY, PHILLIPS  
LIBRARY, Aurora, IL

January 21 to April 10

UNIVERSITY OF DAYTON,  
Dayton, OH

January 22 to February 26

MUSEUM L-A, Lewiston, ME

January 27 to March 24  
COASTAL CAROLINA UNIVERSITY,  
Conway, SC

January 27 to March 3

UNIVERSITY OF TEXAS, PAN  
AMERICAN, Edinburg, TX

January 27 to March 3

UNIVERSITY OF TEXAS,  
Edinburg, TX

January 31 to March 7

ASSUMPTION PARISH LIBRARY,  
Napoleonville, LA

March 10 to April 29

CAMDEN COUNTY COLLEGE,  
Blackwood, NJ

### **Music Unwound, Copland and Mexico**

Lecture programs organized by the Pacific Symphony.

March 17 to March 25

UNIVERSITY OF TEXAS, Austin, TX

March 21 to March 22

AUSTIN SYMPHONY, Austin, TX

### **Muslim Voices**

*Spring*

Reading and discussion programs organized by the New York Council for the Humanities. Contact Erika Halstead  
[ehalstead@nyhumanities.org](mailto:ehalstead@nyhumanities.org).  
[www.nyhumanities.org](http://www.nyhumanities.org)

### **National Dialogues on Immigration**

*Spring*

Dialogues programs organized by the International Coalition of Historic Site Museums of Conscience.  
[www.sitesofconscience.org](http://www.sitesofconscience.org)

## BROADCASTS

### **UPCOMING**

#### **Rockin' the Kremlin**

Produced and directed by Jim Brown. Co-producers and executive producers, Nicholas Binkley and Douglas Yeager. Co-executive producer Stas Namin.  
[www.facebook.com/RockinTheKremlin](http://www.facebook.com/RockinTheKremlin)

## ONGOING EXHIBITIONS AND WEBSITES

### **EAST**

INSTITUTE FOR AMERICAN INDIAN  
STUDIES, Washington, CT

#### **Interpreting the Native American Landscape: The Long House Room**

**Long-term.** [www.iaismuseum.org](http://www.iaismuseum.org)

LAFAYETTE SQUARE,  
Washington, DC

#### **The Half Had Not Been Told Me: African Americans on Lafayette Square**

**Long-term.** Organized by the National Trust for Historic Preservation.  
[www.whitehousehistory.org/decatur-house/african-american-tour/Default.aspx](http://www.whitehousehistory.org/decatur-house/african-american-tour/Default.aspx)

NATIONAL BUILDING MUSEUM,  
Washington, DC

#### **House and Home**

**Long-term.** [www.nbm.org](http://www.nbm.org)

NATIONAL BUILDING MUSEUM,  
Washington, DC

#### **Palaces for the People: Guastavino and America's Great Public Spaces**

**Closes January 20.**

**Traveling.** Organized by the Massachusetts Institute of Technology. [www.nbm.org](http://www.nbm.org)

#### **SOLDIER'S HOME, Washington, DC President Lincoln's Cottage at the Soldiers' Home**

**Long-term.** Organized by the National Trust for Historic Preservation.  
[www.lincolncottage.org](http://www.lincolncottage.org)

MAINE STATE MUSEUM,  
Augusta, ME

#### **At Home in Maine**

**Long-term.** [mainestatemuseum.org](http://mainestatemuseum.org)

MAINE HISTORICAL SOCIETY,  
Portland, ME

#### **Maine Memory Network**

**Website.** [www.mainememory.net](http://www.mainememory.net)



**Mr. Beecher Selling a Beautiful Slave Girl in His Pulpit.** ca. 1860. Brooklyn photograph and illustration collection. V1973.6.115. From the multifaceted project *In Pursuit of Freedom* at the Brooklyn Historical Society. Courtesy, Brooklyn Historical Society. [www.brooklynhistory.org](http://www.brooklynhistory.org)

MAINE HUMANITIES COUNCIL,  
Portland, ME  
**Thoughtful Giving:  
Philanthropy as  
Civic Engagement**  
Website. [www.civicreflection.org](http://www.civicreflection.org)

MAINE HUMANITIES COUNCIL,  
Portland, ME  
**Maine in the Civil War: Making  
Connections though the  
Humanities and Digital History**  
Website. [civilwar.mainememory.net](http://civilwar.mainememory.net)

BALTIMORE MUSEUM OF INDUSTRY,  
Baltimore, MD  
**The Kids' Cannery**  
Long-term. [www.thebmi.org](http://www.thebmi.org)

BALTIMORE MUSEUM OF INDUSTRY,  
Baltimore, MD  
**Garment Loft**  
Long-term. [www.thebmi.org](http://www.thebmi.org)

WALTERS ART MUSEUM,  
Baltimore, MD  
**Medieval Collection**  
Reinstallation. [www.thewalters.org](http://www.thewalters.org)

WALTERS ART MUSEUM,  
Baltimore, MD  
**Egyptian Collection**  
Reinstallation. [www.thewalters.org](http://www.thewalters.org)

WALTERS ART MUSEUM,  
Baltimore, MD  
**Asian Art Collections**  
Reinstallation. [www.thewalters.org](http://www.thewalters.org)

ST. MARY'S CITY, VAN SWERINGEN  
SITE, St. Mary's City, MD  
**Van Sweringen  
Archaeological Site**  
Site interpretation. Organized by Historic St. Mary's City Commission. [www.stmaryscity.org](http://www.stmaryscity.org)

BOSTON CHILDREN'S MUSEUM,  
Boston, MA  
**Boston Black: A City Connects**  
Long-term. [www.bostonkids.org](http://www.bostonkids.org)

COMMONWEALTH MUSEUM,  
Boston, MA  
**Our Common Wealth:  
The Massachusetts  
Experiment in Democracy**  
Long-term. Organized by the Friends of the Commonwealth Museum. [www.sec.state.ma.us/mus/museum/index.htm](http://www.sec.state.ma.us/mus/museum/index.htm)

USS CONSTITUTION MUSEUM,  
Boston, MA  
**All Hands on Deck: A Sailor's  
Life in 1812**  
Long-term. Organized by the USS *Constitution* Museum Foundation, Inc. [www.usconstitutionmuseum.org](http://www.usconstitutionmuseum.org)

HARVARD UNIVERSITY,  
Cambridge, MA  
**DoHistory**  
Website. [www.dohistory.org](http://www.dohistory.org)

MOUNT AUBURN CEMETERY,  
Cambridge, MA  
**Mount Auburn Cemetery: A  
New American Landscape**  
Long-term. Organized by the Friends of Mount Auburn Cemetery. [www.mountauburn.org](http://www.mountauburn.org)

CONCORD MUSEUM, Concord, MA  
**"Why Concord?" The History of  
Concord, Massachusetts**  
Long-term. [www.concordmuseum.org](http://www.concordmuseum.org)

POCUMTUCK VALLEY MEMORIAL  
ASSOCIATION, Deerfield, MA  
**Raid on Deerfield: The Many  
Stories of 1704**  
Website. [www.1704.deerfield.history.museum](http://www.1704.deerfield.history.museum)

MARTHA'S VINEYARD MUSEUM,  
Edgartown, MA  
**Laura Jernegan: Girl on a  
Whaleship**  
Website. [www.girlonawhaleship.org](http://www.girlonawhaleship.org)

HOLYOKE HERITAGE STATE PARK,  
CHILDREN'S MUSEUM AT  
HOLYOKE, WISTARIAHURST  
MUSEUM, Holyoke, MA  
**Creating Holyoke: Immigrants'  
and Migrants' Search for  
Community**  
Site interpretation. Organized by the Wistariahurst Museum/City of Holyoke. [www.creatingholyokey.org](http://www.creatingholyokey.org)

ARNOLD ARBORETUM OF  
HARVARD UNIVERSITY,  
Jamaica Plain, MA  
**Science in the Pleasure  
Ground: An Exploration of  
Arboretum History**  
Long-term. [www.arboretum.harvard.edu](http://www.arboretum.harvard.edu)

NEW BEDFORD WHALING  
MUSEUM, New Bedford, MA  
**From Pursuit to Preservation:  
The Global Story of Whales  
and Whaling**  
Long-term. [www.whalingmuseum.org/explore/exhibitions/current/pursuit-to-preservation](http://www.whalingmuseum.org/explore/exhibitions/current/pursuit-to-preservation)

HANCOCK SHAKER VILLAGE,  
Pittsfield, MA  
**Audio Tour**  
Site interpretation. [www.hancockshakervillage.org](http://www.hancockshakervillage.org)



PLIMOTH PLANTATION,  
Plymouth, MA  
**Thanksgiving: Memory, Myth,  
and Meaning**  
Long-term. [www.plimoth.org](http://www.plimoth.org)

SPRINGFIELD TECHNICAL  
COMMUNITY COLLEGE,  
Springfield, MA  
**Shays' Rebellion and the  
Making of a Nation: From  
Revolution to Constitution**  
Website. [www.shaysrebellion.stcc.edu](http://www.shaysrebellion.stcc.edu)

OLD STURBRIDGE VILLAGE,  
Sturbridge, MA  
**Back to Our Roots: A New  
Vision of New England Farming  
and Rural Life**  
Site interpretation. [www.osv.org](http://www.osv.org)

MUSEUM OF NEW HAMPSHIRE  
HISTORY, Concord, NH  
**New Hampshire Through  
Many Eyes**  
Long-term. Organized by the New Hampshire  
Historical Society. [www.nhhistory.org](http://www.nhhistory.org)

STRAWBERRY BANKE,  
Portsmouth, NH  
**Crossroads of a Neighborhood  
in Change: The Corner  
Grocery Store at Strawberry  
Banke During WWII**  
Long-term. [www.strawberrybanke.org](http://www.strawberrybanke.org)

STRAWBERRY BANKE,  
Portsmouth, NH  
**Becoming Americans: The  
Shapiro Story, 1898-1928**  
Long-term. [www.strawberrybanke.org](http://www.strawberrybanke.org)

NEWARK MUSEUM, Newark, NJ  
**Picturing America**  
Reinstallation. [www.newarkmuseum.org](http://www.newarkmuseum.org)

NEW YORK STATE MUSEUM,  
Albany, NY  
**A Mohawk-Iroquois Village**  
Long-term. [www.nysm.nysed.gov](http://www.nysm.nysed.gov)

MONTGOMERY PLACE,  
Annandale-on-Hudson, NY  
**American Arcadia: People,  
Landscape, and Nature at  
Montgomery Place**  
Site interpretation. Organized by Historic  
Hudson Valley.  
[www.hudsonvalley.org/content/view/16/46](http://www.hudsonvalley.org/content/view/16/46)

HOLLAND LAND OFFICE MUSEUM,  
Batavia, NY  
**Lincoln: The Constitution and  
the Civil War**  
Closes January 24.  
Traveling. Organized by the National  
Constitution Center. [www.ala.org](http://www.ala.org)

BROOKLYN CHILDREN'S MUSEUM,  
Brooklyn, NY  
**World Brooklyn**  
Long-term. [www.bchildmus.org](http://www.bchildmus.org)

BROOKLYN HISTORICAL SOCIETY,  
Brooklyn, NY  
**Crossing Borders, Bridging  
Generations: A Study of Mixed-  
Heritage Families in Brooklyn**  
Website. [www.cbbg.brooklynhistory.org](http://www.cbbg.brooklynhistory.org)

BROOKLYN MUSEUM OF ART,  
Brooklyn, NY  
**Egypt Reborn: Art for Eternity**  
Reinstallation. [www.brooklynart.org](http://www.brooklynart.org)

BROOKLYN MUSEUM OF ART,  
Brooklyn, NY  
**Behind Closed Doors: Power  
and Privilege at Home in  
Spanish America**  
Closes January 12.  
Traveling. [www.brooklynmuseum.org](http://www.brooklynmuseum.org)

BROOKLYN NAVY YARD,  
Brooklyn, NY  
**Brooklyn Navy Yard: Past,  
Present, and Future**  
Long-term. Organized by the Brooklyn Navy  
Yard Development Corporation.  
[www.bldg92.com](http://www.bldg92.com)

THOMAS COLE HOUSE,  
Catskill, NY  
**The Home and Studio of Thomas  
Cole, Founder of the Hudson  
River School of Art**  
Long-term. Organized by the Greene County  
Historical Society. [www.thomascole.org](http://www.thomascole.org)

FENIMORE ART MUSEUM,  
Cooperstown, NY  
**Seneca Log House**  
Long-term. Organized by the Farmers'  
Museum. [www.farmersmuseum.org](http://www.farmersmuseum.org)

FENIMORE ART MUSEUM,  
Cooperstown, NY  
**Mohawk Bark House**  
Long-term. Organized by the Farmers'  
Museum. [www.fenimoreartmuseum.org](http://www.fenimoreartmuseum.org)

STE. MARIE DE GANNENTAHA  
LIVING HISTORY MUSEUM,  
Liverpool, NY  
**Sainte Marie Among  
the Iroquois**  
Long-term. Organized by the Office of  
Museums, Onondaga County Parks.  
[www.onondagacountyparks.com](http://www.onondagacountyparks.com)

CENTER FOR NEW AMERICAN  
MEDIA, INC., New York, NY  
**Past/Present**  
Website. [www.pastpresent.org](http://www.pastpresent.org)

CITY LORE, New York, NY  
**Poetic Voices of the  
Muslim World**  
Website. Organized by City Lore, Inc.  
[www.pvmw.org](http://www.pvmw.org)

ELDRIDGE STREET SYNAGOGUE,  
New York, NY  
**Museum at Eldridge Street**  
Site interpretation. Organized by the Eldridge  
Street Project. [www.eldridgestreet.org](http://www.eldridgestreet.org)

ELLIS ISLAND, New York, NY  
**Future in the Balance:  
Immigration, Public Health, and  
the Ellis Island Hospitals**  
Long-term. Organized by Save Ellis Island, Inc.  
[www.saveellisland.org](http://www.saveellisland.org)

LOWER EAST SIDE TENEMENT  
MUSEUM, New York, NY  
**Shop Life**

Long-term. [www.tenement.org](http://www.tenement.org)

LOWER EAST SIDE TENEMENT  
MUSEUM, New York, NY  
**Piecing It Together: Immigrants  
in the Garment Industry**

Long-term. [www.tenement.org](http://www.tenement.org)

LOWER EAST SIDE TENEMENT  
MUSEUM, New York, NY  
**1863 Tenement House Tour**

Long-term. [www.tenement.org](http://www.tenement.org)

MOUNT VERNON HOTEL MUSEUM  
& GARDEN, New York, NY  
**Reinterpretation of the Abigail  
Adams Smith Museum as the  
Mount Vernon Hotel (1826-1833)**

Reinstallation. Organized by the Colonial  
Dames of America. [www.mvhm.org](http://www.mvhm.org)

NEW YORK BOTANICAL GARDEN,  
New York, NY  
**Nature and Culture in  
the Garden**

Long-term. [www.nybg.org](http://www.nybg.org)

RUBIN MUSEUM OF ART,  
New York, NY  
**Explore Art: Life Through  
Himalayan Paintings**

Website. [exploreart.rma2.org](http://exploreart.rma2.org)

WNET.ORG, New York, NY  
**Mission US: A Revolutionary  
Way to Learn History**

Website. [www.mission-us.org](http://www.mission-us.org)

ROCHESTER MUSEUM AND SCIENCE  
CENTER, Rochester, NY  
**Expedition Earth**

Reinstallation. [www.rmssc.org](http://www.rmssc.org)

PHILIPSBURG MANOR,  
Sleepy Hollow, NY  
**Philipsburg Manor**

Site interpretation. Organized by Historic  
Hudson Valley. [www.hudsonvalley.org](http://www.hudsonvalley.org)

An interactive exhibit from  
**Expedition Earth** at the  
Rochester Museum and  
Science Center, Rochester,  
New York. Courtesy,  
[www.tjtphoto.com](http://www.tjtphoto.com).  
[www.rmssc.org](http://www.rmssc.org)



ST. BONAVENTURE UNIVERSITY,  
St. Bonaventure, NY

**House and Home**

Closes January 7.

Traveling. Organized by ExhibitsUSA. Based  
on an exhibition organized by the National  
Building Museum. [www.nehontheroad.org](http://www.nehontheroad.org)

LONG ISLAND MUSEUM OF  
AMERICAN ART, HISTORY, AND  
CARRIAGES, Stony Brook, NY  
**Streets of New York**

Long-term. [www.longislandmuseum.org](http://www.longislandmuseum.org)

LONG ISLAND MUSEUM OF  
AMERICAN ART, HISTORY, AND  
CARRIAGES, Stony Brook, NY  
**Going Places: How Horse-Drawn  
Vehicles Shaped American Life**

Long-term. [www.longislandmuseum.org](http://www.longislandmuseum.org)

LONG ISLAND MUSEUM OF  
AMERICAN ART, HISTORY, AND  
CARRIAGES, Stony Brook, NY  
**Carriages for Sport and Pleasure**

Long-term. [www.longislandmuseum.org](http://www.longislandmuseum.org)

WTF, INC., Harrisburg, PA  
**ExplorePAHistory.com**

Website. [www.explorepahistory.com](http://www.explorepahistory.com)

JOSEPH PRIESTLEY HOME,  
Northumberland, PA  
**Joseph Priestley: Reason, Order,  
and Plainness**

Site interpretation. Organized by the Friends  
of Joseph Priestley Home.  
[www.josephpriestleyhouse.org](http://www.josephpriestleyhouse.org)

INDEPENDENCE SEAPORT MUSEUM,  
Philadelphia, PA

**Home Port Philadelphia**

Long-term. [www.phillyseaport.org](http://www.phillyseaport.org)

PHILADELPHIA MUSEUM OF ART,  
Philadelphia, PA

**European Collections**

Reinstallation. [www.philamuseum.org](http://www.philamuseum.org)

PHILADELPHIA OUTDOOR  
SCULPTURE SITES, Philadelphia, PA  
**Museum Without Walls**

Walking tour. Organized by the Association  
for Public Art. [associationforpublicart.org](http://associationforpublicart.org)

PLEASE TOUCH MUSEUM®,  
Philadelphia, PA

**Centennial Exploration**

Long-term. [www.pleasetouchmuseum.org](http://www.pleasetouchmuseum.org)

PLEASE TOUCH MUSEUM®,  
Philadelphia, PA

**Wonderland**

Long-term. [www.pleasetouchmuseum.org](http://www.pleasetouchmuseum.org)

UNIVERSITY OF PENNSYLVANIA  
MUSEUM OF ARCHAEOLOGY  
AND ANTHROPOLOGY,  
Philadelphia, PA

**Living in Balance:  
The Universe of the Hopi,  
Zuni, Navajo, and Apache**

Long-term. [www.museum.upenn.edu](http://www.museum.upenn.edu)

CARNEGIE MUSEUM OF NATURAL  
HISTORY, Pittsburgh, PA  
**Alcoa Foundation Hall of  
American Indians**

Long-term. [www.carnegiemnh.org](http://www.carnegiemnh.org)

CARNEGIE MUSEUM OF NATURAL HISTORY, Pittsburgh, PA  
**Walton Hall of Ancient Egypt**  
Long-term. [www.carnegiemnh.org](http://www.carnegiemnh.org)

SENATOR JOHN HEINZ PITTSBURGH REGIONAL HISTORY CENTER, Pittsburgh, PA  
**Pittsburgh: A Tradition of Innovation**  
Long-term. [www.pghhistory.org](http://www.pghhistory.org)

MUSEUM OF NEWPORT HISTORY, Newport, RI  
**Museum of Newport History at the Brick Market**  
Long-term. Organized by the Newport Historical Society and the Museum of Newport History. [www.newporthistorical.org](http://www.newporthistorical.org)

PROVIDENCE PUBLIC LIBRARY, Providence, RI  
**Lincoln: The Constitution and the Civil War**  
Closes January 24.  
Traveling. Organized by the National Constitution Center. [www.ala.org](http://www.ala.org)

MUSEUM OF WORK AND CULTURE, Woonsocket, RI  
**La Survivance: French-Canadians in Woonsocket, Rhode Island**  
Long-term. Organized by the Rhode Island Historical Society. [www.rihs.org](http://www.rihs.org)

ROKEBY MUSEUM, Ferrisburgh, VT  
**Underground Railroad in Vermont**  
Long-term. [www.rokeby.org](http://www.rokeby.org)

VERMONT HISTORY MUSEUM, Montpelier, VT  
**Interpreting the Interstates: How Highways Changed Rural America's Sense of Place**  
Closes April 26.  
Site interpretation. Organized by the University of Vermont. [vermonthistory.org/visit/vermont-history-museum/museum-current-exhibits](http://vermonthistory.org/visit/vermont-history-museum/museum-current-exhibits)

**MIDWEST**  
ADLER PLANETARIUM & ASTRONOMY MUSEUM, Chicago, IL  
**Bringing the Heavens to Earth: Cultural Astronomies Around the World**  
Long-term. [www.adlerplanetarium.org](http://www.adlerplanetarium.org)

ADLER PLANETARIUM & ASTRONOMY MUSEUM, Chicago, IL  
**The Universe in Your Hands**  
Long-term. [www.adlerplanetarium.org](http://www.adlerplanetarium.org)

FIELD MUSEUM, Chicago, IL  
**Africa**  
Long-term. [www.fieldmuseum.org](http://www.fieldmuseum.org)

FIELD MUSEUM, Chicago, IL  
**Peoples of the Pacific: Traveling the Pacific and Pacific Spirits**  
Long-term. [www.fieldmuseum.org](http://www.fieldmuseum.org)

HULL-HOUSE MUSEUM, Chicago, IL  
**Redefining Democracy: Jane Addams and the Hull-House Settlement**  
Reinstallation. Organized by the University of Illinois at Chicago. [www.uic.edu/jaddams/hull](http://www.uic.edu/jaddams/hull)

NEWBERRY LIBRARY, Chicago, IL  
**The Indians of the Midwest**  
Website. [www.newberry.org](http://www.newberry.org)

CAHOKIA MOUNDS MUSEUM SOCIETY, Collinsville, IL  
**Mark of the Mississippians**  
Website. [www.archaeoexplorer.com/media](http://www.archaeoexplorer.com/media)

ILLINOIS STATE MUSEUM, Springfield, IL  
**At Home in the Heartland**  
Long-term. [www.museum.state.il.us](http://www.museum.state.il.us)

CONNER PRAIRIE MUSEUM, Fishers, IN  
**1863 Civil War Journey: Raid on Indiana**  
Long-term. [civilwar.connerprairie.org](http://civilwar.connerprairie.org)

CHILDREN'S MUSEUM OF INDIANAPOLIS, Indianapolis, IN  
**The Power of Children: Making a Difference**  
Long-term. [www.childrensmuseum.org/themuseum/powerofchildren/html/index.html](http://www.childrensmuseum.org/themuseum/powerofchildren/html/index.html)

MISSISSIPPI RIVER MUSEUM & AQUARIUM, Dubuque, IA  
**Make Me a River: Visions and Revisions of the Upper Mississippi**  
Long-term. Organized by the Mississippi River Museum. [www.mississippirivermuseum.com](http://www.mississippirivermuseum.com)

MISSISSIPPI RIVER MUSEUM AND AQUARIUM, Dubuque, IA  
**National Mississippi River Museum and Aquarium**  
Long-term. Organized by the Dubuque County Historical Society. [www.mississippirivermuseum.com](http://www.mississippirivermuseum.com)

BROWN COUNTY HISTORICAL SOCIETY, Hiawatha, KS  
**Our Lives, Our Stories: America's Greatest Generation**  
Closes January 7.  
Traveling. Organized by ExhibitsUSA. Based on an exhibition organized by the Minnesota Historical Society. [www.nehontheroad.org](http://www.nehontheroad.org)

ADRIAN PUBLIC LIBRARY, Adrian, MI  
**Lincoln: The Constitution and the Civil War**  
Closes January 24.  
Traveling. Organized by the National Constitution Center. [www.ala.org](http://www.ala.org)

THE HENRY FORD MUSEUM, Dearborn, MI  
**Made in America: The History of the American Industrial System**  
Long-term. [www.hfmgv.org](http://www.hfmgv.org)

THE HENRY FORD MUSEUM, Dearborn, MI  
**Your Place in Time: 20th-Century America**  
Long-term. [www.thehenryford.org/exhibits/ypit/indexhtml](http://www.thehenryford.org/exhibits/ypit/indexhtml)

THE HENRY FORD MUSEUM,  
Dearborn, MI  
**Heroes of the Sky: Adventures in  
Early Flight**  
Long-term. [www.hfmgv.org](http://www.hfmgv.org)

CHARLES H. WRIGHT MUSEUM OF  
AFRICAN AMERICAN HISTORY,  
Detroit, MI  
**Bandits & Heroes, Poets &  
Saints: Popular Art of the  
Northeast of Brazil**  
Closes January 5.  
Traveling. Organized by Con/Vida - Popular  
Arts of the Americas. [thewright.org](http://thewright.org)

DETROIT INSTITUTE OF ARTS,  
Detroit, MI  
**Great Art: New Start**  
Reinstallation. [www.dia.org](http://www.dia.org)

MICHIGAN STATE UNIVERSITY,  
East Lansing, MI  
**Voices from Detroit: American  
Black Journal Online**  
Website. [www.matrix.msu.edu/~abj](http://www.matrix.msu.edu/~abj)

GRAND RAPIDS PUBLIC MUSEUM,  
Grand Rapids, MI  
**Furniture City**  
Long-term. [www.grmuseum.org](http://www.grmuseum.org)

GRAND RAPIDS PUBLIC MUSEUM,  
Grand Rapids, MI  
**Anishinabek: The People of  
This Place**  
Long-term. [www.grmuseum.org](http://www.grmuseum.org)

GRAND RAPIDS PUBLIC MUSEUM,  
Grand Rapids, MI  
**Newcomers: The People of  
This Place**  
Long-term. [www.grmuseum.org](http://www.grmuseum.org)

INTERNATIONAL WOLF CENTER,  
Ely, MN  
**Wolves and Humans:  
Coexistence, Competition,  
and Conflict**  
Long-term. Organized by the Science Museum  
of Minnesota. [www.wolf.org](http://www.wolf.org)

MILL CITY MUSEUM,  
Minneapolis, MN  
**Mill City Museum**  
Long-term. Organized by the Minnesota  
Historical Society. [www.millcitymuseum.org](http://www.millcitymuseum.org)

MINNEAPOLIS INSTITUTE OF ART,  
Minneapolis, MN  
**Material Journeys: African Art  
in Motion**  
Reinstallation. Organized by the Minneapolis  
Society of Fine Arts. [www.artsmia.org](http://www.artsmia.org)

MILLE LACS INDIAN MUSEUM,  
Onamia, MN  
**Learn About Our Past: The Story  
of the Mille Lacs Band of Ojibwe**  
Long-term. Organized by the Minnesota  
Historical Society. [www.mnhs.org](http://www.mnhs.org)

LANDMARK CENTER, St. Paul, MN  
**Uncle Sam Worked Here**  
Long-term. Organized by the Minnesota  
Landmarks. [www.landmarkcenter.org](http://www.landmarkcenter.org)

MINNESOTA HISTORICAL SOCIETY,  
St. Paul, MN  
**Open House**  
Long-term. [www.mnhs.org](http://www.mnhs.org)

MINNESOTA HISTORY CENTER,  
St. Paul, MN  
**Minnesota's Greatest  
Generation: The Depression,  
The War, The Boom**  
Long-term. Organized by the Minnesota  
Historical Society.  
[www.mnhs.org/people/mnngg/index.htm](http://www.mnhs.org/people/mnngg/index.htm)

MINNESOTA HISTORY CENTER,  
St. Paul, MN  
**American Spirits: The Rise and  
Fall of Prohibition**  
Closes March 16.  
Traveling. Organized by the National  
Constitution Center. [constitutioncenter.org](http://constitutioncenter.org)

MISSOURI HISTORY MUSEUM,  
St. Louis, MO  
**The 1968 Project**  
Closes January 5.  
Traveling. Organized by the Minnesota  
Historical Society. [www.the1968exhibit.org](http://www.the1968exhibit.org)

UNIVERSITY OF NEBRASKA, BOARD  
OF REGENTS, Lincoln, NE  
**The Journals of the Lewis and  
Clark Expedition Online Edition**  
Website. [lewisandclarkjournals.unl.edu](http://lewisandclarkjournals.unl.edu)

CINCINNATI ART MUSEUM,  
Cincinnati, OH  
**The Cincinnati Wing: The Story  
of Art in the Queen City**  
Long-term. [www.cincinnatiartmuseum.org](http://www.cincinnatiartmuseum.org)

KENT STATE UNIVERSITY, VISITORS  
CENTER, Kent, OH  
**Making Meaning of May 4th:  
The Kent State Shootings in  
American History**  
Long-term. Organized by Kent State  
University. [www.kent.edu](http://www.kent.edu)

OHIO STATE UNIVERSITY,  
Newark, OH  
**The Ancient Ohio Trail: A  
Media-Enhanced Cultural  
Heritage Experience**  
Website. Organized by the Ohio State  
University Research Foundation.  
[www.ancientohiotrail.org](http://www.ancientohiotrail.org)

SOUTH DAKOTA STATE HISTORICAL  
SOCIETY, CULTURAL HERITAGE  
CENTER, Pierre, SD  
**Proving Up**  
Long-term. [history.sd.gov/museum](http://history.sd.gov/museum)

CHIPPEWA VALLEY MUSEUM,  
Eau Claire, WI  
**Farm Life: A Century of  
Change for Farm Families  
and Their Neighbors**  
Long-term. [www.cvmuseum.com](http://www.cvmuseum.com)

MILWAUKEE PUBLIC MUSEUM,  
Milwaukee, WI  
**A Tribute to Survival**  
Long-term. [www.mpm.edu](http://www.mpm.edu)

VERONA PUBLIC LIBRARY,  
Verona, WI  
**Lincoln: The Constitution and  
the Civil War**  
Closes January 24.  
Traveling. Organized by the National  
Constitution Center. [www.ala.org](http://www.ala.org)



## **SOUTH**

CARL ELLIOTT HOUSE MUSEUM,  
Jasper, AL

### **Carl Elliott House**

**Long-term.** Organized by the Beville State  
Community College. [www.bscc.edu/elliott](http://www.bscc.edu/elliott)

SEMINOLE COUNTY PUBLIC  
LIBRARY SYSTEM, Casselberry, FL  
**Civil War 150: Exploring the War  
and its Meaning Through the  
Words of Those Who Lived It**

**Closes January 27.**

**Traveling.** Organized by the Library of  
America. [www.gilderlehrman.org/civilwar150](http://www.gilderlehrman.org/civilwar150)

FLORIDA MUSEUM OF NATURAL  
HISTORY, Gainesville, FL

### **South Florida: People and Environments**

**Long-term.** Organized by the University of  
Florida. [www.flmnh.ufl.edu](http://www.flmnh.ufl.edu)

MISSION SAN LUIS, Tallahassee, FL  
**San Luis de Apalachee:  
Interpretation of a 17th-Century  
Spanish Mission**

**Long-term.** Organized by the Florida Division  
of Historical Resources.  
[www.missionsanluis.org](http://www.missionsanluis.org)

ATLANTA HISTORY CENTER,  
Atlanta, GA

### **Metropolitan Frontiers:**

**Atlanta, 1835–2000**

**Long-term.** [www.atlhist.org](http://www.atlhist.org)

ATLANTA HISTORY CENTER,  
Atlanta, GA

### **Turning Point: The American Civil War**

**Long-term.** [www.atlhist.org](http://www.atlhist.org)

LAUREL COUNTY PUBLIC LIBRARY,  
London, KY

### **Lincoln: The Constitution and the Civil War**

**Closes January 24.**

**Traveling.** Organized by the National  
Constitution Center. [www.ala.org](http://www.ala.org)

SMITH ROBERTSON MUSEUM &  
CULTURAL CENTER, Jackson, MS  
**Field to Factory: Afro-American  
Migration, 1915–1940**

**Long-term.**

[www.jacksonms.gov/visitors/museums/  
smithrobertson](http://www.jacksonms.gov/visitors/museums/smithrobertson)

LAUREN ROGERS MUSEUM OF ART,  
Laurel, MS

### **By Native Hands: Woven Treasures from the Lauren Rogers Museum of Art**

**Reinstallation.** [www.lrma.org](http://www.lrma.org)

LEVINE MUSEUM OF THE NEW  
SOUTH, Charlotte, NC  
**Cotton Fields to Skyscrapers:  
Charlotte and the Carolina  
Piedmont in the New South**

**Long-term.** [www.museumofthenewsouth.org](http://www.museumofthenewsouth.org)

MUSEUM OF THE CHEROKEE  
INDIAN, Cherokee, NC  
**Emissaries of Peace: The 1762  
Cherokee/British Delegations**

**Long-term.** [www.cherokeemuseum.org](http://www.cherokeemuseum.org)

LEXINGTON PUBLIC LIBRARY,  
Lexington, NC

### **Lincoln: The Constitution and the Civil War**

**Closes January 24.**

**Traveling.** Organized by the National  
Constitution Center. [www.ala.org](http://www.ala.org)

HERMITAGE, Hermitage, TN  
**The Hermitage, Andrew Jackson,  
and a Changing America**

**Site interpretation.** [www.thehermitage.com](http://www.thehermitage.com)

EAST TENNESSEE HISTORICAL  
SOCIETY, Knoxville, TN  
**Voices of the Land: The People  
of East Tennessee**

**Long-term.** [www.east-tennessee-history.org](http://www.east-tennessee-history.org)

MONTICELLO, Charlottesville, VA  
**Mulberry Row and the  
Landscape of Slavery at  
Jefferson's Monticello**

**Site interpretation.** Organized by the Thomas  
Jefferson Memorial Foundation.  
[www.monticello.org](http://www.monticello.org)

MONTICELLO, Charlottesville, VA

### **Domestic Life and the Plantation Community at Jefferson's Monticello**

**Site interpretation.** Organized by the Thomas  
Jefferson Memorial Foundation.  
[www.monticello.org](http://www.monticello.org)

MONTICELLO VISITOR CENTER,  
Charlottesville, VA

### **To Try All Things**

**Long-term.** Organized by the Thomas Jefferson  
Memorial Foundation. [www.monticello.org](http://www.monticello.org)

GEORGE MASON UNIVERSITY,  
Fairfax, VA

### **Gulag: Many Days, Many Lives**

**Website.** [gulaghhistory.org](http://gulaghhistory.org)

R. R. MOTON HIGH SCHOOL,  
Farmville, VA

### **The Moton School Story: Children of Courage**

**Long-term.** Organized by the Robert R. Moton  
Museum Inc. [www.motonmuseum.org](http://www.motonmuseum.org)

MAYMONT, Richmond, VA  
**In Service and Beyond:  
Domestic Work and Life in  
a Gilded Age Mansion**

**Long-term.** Organized by the Maymont  
Foundation. [www.maymont.org](http://www.maymont.org)

VALENTINE RICHMOND HISTORY  
CENTER, Richmond, VA

### **Creating History:**

**The Valentine Family and  
the Valentine Museum**

**Long-term.** [www.richmondhistorycenter.com](http://www.richmondhistorycenter.com)

VIRGINIA HISTORICAL SOCIETY,  
Richmond, VA

### **An American Turning Point: The Civil War in Virginia**

**Website.** Organized by the Virginia  
Sesquicentennial of the American Civil War  
Commission.  
[www.vahistorical.org/civilwar/introductionhtm](http://www.vahistorical.org/civilwar/introductionhtm)

COLONIAL WILLIAMSBURG,  
Williamsburg, VA

### **From Subjects to Citizens: Williamsburg and the American Revolution**

**Website.** [www.ouramericanrevolution.org](http://www.ouramericanrevolution.org)

## **SOUTHWEST**

BISBEE MINING & HISTORICAL MUSEUM, Bisbee, AZ

### **Bisbee: Urban Outpost on the Frontier**

Long-term. [www.bisbeemuseum.org](http://www.bisbeemuseum.org)

FORT APACHE HISTORIC PARK, Fort Apache, AZ

### **Transitions in the Apache World: The Fort Apache Legacy**

Long-term. Organized by the White Mountain Apache Tribe.

[www.wmonline.com/attract/ftapache.htm](http://www.wmonline.com/attract/ftapache.htm)

DESERT BOTANICAL GARDEN, Phoenix, AZ

### **Plants and People of the Sonoran Desert**

Long-term. [www.dbg.org](http://www.dbg.org)

HEARD MUSEUM, Phoenix, AZ

### **Remembering Our Indian School Days: The Boarding School Experience**

Long-term. [www.heard.org](http://www.heard.org)

ARIZONA STATE MUSEUM, Tucson, AZ

### **Paths of Life: American Indians of the Southwest**

Long-term. Organized by the University of Arizona. [www.statemuseum.arizona.edu](http://www.statemuseum.arizona.edu)

MAXWELL MUSEUM OF ANTHROPOLOGY, Albuquerque, NM

### **People of the Southwest**

Long-term. [www.unm.edu/~maxwell](http://www.unm.edu/~maxwell)

MAXWELL MUSEUM OF ANTHROPOLOGY, Albuquerque, NM

### **Ancestors**

Long-term. [www.unm.edu/~maxwell](http://www.unm.edu/~maxwell)

CITY OF LAS CRUCES BRANIGAN CULTURAL CENTER, Las Cruces, NM

### **Lincoln: The Constitution and the Civil War**

Closes January 24.

Traveling. Organized by the National Constitution Center. [www.ala.org](http://www.ala.org)

MUSEUM OF INDIAN ARTS AND CULTURE, Santa Fe, NM

### **Here, Now, and Always**

Long-term. Organized by the Museum of New Mexico Foundation. [www.miaclab.org](http://www.miaclab.org)

EL CAMINO REAL INTERNATIONAL HERITAGE CENTER, Socorro, NM

### **Traveling el Camino Real: Caminando el Camino Real**

Long-term. Organized by the Museum of New Mexico. [www.nmmonuments.org](http://www.nmmonuments.org)

A:SHIWI A:WAN MUSEUM AND HERITAGE CENTER, Zuni, NM

### **Hawikku: Echoes from Our Past**

Long-term. [www.ashiwi.org/enterprise.aspx](http://www.ashiwi.org/enterprise.aspx)

OKLAHOMA HISTORY CENTER, Oklahoma City, OK

### **We Are Who We Were**

Long-term. Organized by the Oklahoma Historical Society. [www.okhistory.org](http://www.okhistory.org)

BELL COUNTY MUSEUM, Belton, TX

### **Bison**

Closes January 7.

Traveling. Organized by ExhibitsUSA. Based on an exhibition organized by the Trigg C. M. Russell Foundation. [www.nehontheroad.org](http://www.nehontheroad.org)

DENTON PUBLIC LIBRARY, Denton, TX

### **Lincoln: The Constitution and the Civil War**

Closes January 24.

Traveling. Organized by the National Constitution Center. [www.ala.org](http://www.ala.org)

## **WEST**

ANCHORAGE MUSEUM OF HISTORY AND ART, Anchorage, AK

### **Alaska Gallery**

Reinstallation. Organized by the Anchorage Museum Association. [www.anchoragemuseum.org](http://www.anchoragemuseum.org)

UNIVERSITY OF ALASKA MUSEUM, Fairbanks, AK

### **Rose Berry Alaskan Art Gallery**

Reinstallation. [www.uaf.edu/museum](http://www.uaf.edu/museum)

PRATT MUSEUM, Homer, AK

### **Kachemak Bay, Alaska: An**

### **Exploration of People and Place**

Reinstallation. [www.prattmuseum.org](http://www.prattmuseum.org)

FORT ROSS STATE HISTORIC PARK, Jenner, CA

### **Rotchev House Museum Exhibit at Fort Ross, California**

Long-term. Organized by the Fort Ross Interpretive Association. [www.fortrossinterpretive.org](http://www.fortrossinterpretive.org)

FOWLER MUSEUM AT UCLA, Los Angeles, CA

### **Intersections: World Arts, Local Lives**

Reinstallation. [www.fowler.ucla.edu](http://www.fowler.ucla.edu)

OAKLAND MUSEUM OF CALIFORNIA, Oakland, CA

### **Coming to California: The Gallery of California History**

Long-term. Organized by the Oakland Museum of California Foundation. [www.museumca.org](http://www.museumca.org)

PERALTA HACIENDA HISTORICAL PARK, Oakland, CA

### **Every Human Being Makes History**

Site interpretation. Organized by the Friends of Peralta Hacienda Historical Park. [www.peraltahacienda.org](http://www.peraltahacienda.org)

MUSEUM OF HISTORY AND ART, ONTARIO, Ontario, CA

### **Road Ways**

Long-term.

[www.ci.ontario.ca.us/index.cfm/1605](http://www.ci.ontario.ca.us/index.cfm/1605)

ASIAN ART MUSEUM OF SAN FRANCISCO, San Francisco, CA

### **Permanent Collections Galleries**

Long-term. [www.asianart.org](http://www.asianart.org)

BAY AREA DISCOVERY MUSEUM, San Francisco, CA

### **Native Voices: New England Tribal Families**

Closes January 13.

Traveling. Organized by the Boston Children's Museum. [www.bostonkids.org](http://www.bostonkids.org)

COIT TOWER, RINCON ANNEX, CITY COLLEGE, MARINE MARITIME MUSEUM, San Francisco, CA

### **New Deal Murals of San Francisco**

Walking tour. Organized by KQED, Inc. [www.kqed.org](http://www.kqed.org)

BAY AREA DISCOVERY MUSEUM,  
Sausalito, CA  
**Nurturing Creativity through  
Arts, Science & Environment**  
Long-term. [www.baykidsmuseum.org](http://www.baykidsmuseum.org)

DENVER ART MUSEUM,  
Denver, CO  
**Asian Art Collection**  
Reinstallation. [www.denverartmuseum.org](http://www.denverartmuseum.org)

MOLLY BROWN HOUSE MUSEUM,  
Denver, CO  
**Molly Brown: The Biography of  
a Changing Nation**  
Long-term. [www.mollybrown.org](http://www.mollybrown.org)

ARIZONA STATE UNIVERSITY,  
Grand Canyon, CO  
**Nature, Culture, and History at  
the Grand Canyon**  
Website. [grandcanyonhistory.clas.asu.edu](http://grandcanyonhistory.clas.asu.edu)

MESA STATE COLLEGE TOMLINSON  
LIBRARY, Grand Junction, CO  
**Lincoln: The Constitution and  
the Civil War**  
Closes January 24.  
Traveling. Organized by the National  
Constitution Center. [www.ala.org](http://www.ala.org)

KONA COFFEE FARM,  
Captain Cook, HI  
**Kona Coffee Living  
History Farm**  
Site interpretation. Organized by the Kona  
Historical Society. [www.konahistorical.org](http://www.konahistorical.org)

KONA HISTORIC RANCH,  
Captain Cook, HI  
**Kona Historic Ranch and Store**  
Site interpretation. Organized by the Kona  
Historical Society. [www.konahistorical.org](http://www.konahistorical.org)

C. M. RUSSELL MUSEUM,  
Great Falls, MT  
**The Bison: American Icon, Heart  
of Plains Indian Culture**  
Long-term. Organized by the Trigg C. M.  
Russell Foundation. [cmrussell.org](http://cmrussell.org)

Still from the documentary "Say Amen,  
Somebody," part of the public program  
series *America's Music: A Film History  
of Our Popular Music from Blues to  
Bluegrass to Broadway*  
organized by the Tribeca Film Institute.  
Copyright © 2012 George Nierenberg  
[americasmusic.tribecafilm.institute.org](http://americasmusic.tribecafilm.institute.org)



UNIVERSITY OF MONTANA,  
Missoula, MT  
**Civil War 150: Exploring the War  
and its Meaning Through the  
Words of Those Who Lived It**  
Closes January 27.  
Traveling. Organized by the Library of  
America. [www.gilderlehrman.org/civilwar150](http://www.gilderlehrman.org/civilwar150)

HIGH DESERT MUSEUM, Bend, OR  
**By Hand Through Memory:  
Native People of the  
Columbia River Plateau in  
the Twentieth Century**  
Long-term. [www.highdesertmuseum.org](http://www.highdesertmuseum.org)

OREGON MUSEUM OF SCIENCE AND  
INDUSTRY, Portland, OR  
**More Power to You!**  
Long-term. [www.oms.edu](http://www.oms.edu)

UTAH MUSEUM OF NATURAL  
HISTORY, Salt Lake City, UT  
**Native Voices: People of  
the Great Basin and  
Colorado Plateau**  
Long-term. [umnh.utah.edu/home](http://umnh.utah.edu/home)

CLYMER MUSEUM, Ellensburg, WA  
**Wild Land: Thomas Cole  
and the Birth of American  
Landscape Painting**  
Closes January 7.  
Traveling. Organized by ExhibitsUSA. Based  
on a site interpretation by the Greene County  
Historical Society. [www.nehontheroad.org](http://www.nehontheroad.org)

BURKE MUSEUM OF NATURAL  
HISTORY AND CULTURE,  
UNIVERSITY OF WASHINGTON,  
Seattle, WA  
**Pacific Voices**  
Long-term.  
[www.washington.edu/burkemuseum](http://www.washington.edu/burkemuseum)

PLAINS INDIAN MUSEUM,  
Cody, WY  
**Plains Indian Museum**  
Reinstallation. Organized by the Buffalo Bill  
Historical Center. [www.bbhc.org](http://www.bbhc.org)

#### PROGRAM NAME CHANGE

The NEH grant program America's  
Historical and Cultural  
Organizations has been renamed  
**Museums, Libraries, and Cultural  
Organizations**. Upcoming  
deadlines are January 8, 2014, and  
August 2014.  
[www.neh.gov/grants](http://www.neh.gov/grants)

All events, exhibitions, and programs listed  
are supported by grants from the  
National Endowment for the Humanities,  
Division of Public Programs. Please contact the  
host institution for exact dates and times.  
1100 Pennsylvania Avenue, NW, Room 426  
Washington, DC 20506  
(202) 606-8269  
[PublicPgms@neh.gov](mailto:PublicPgms@neh.gov)

For more information about NEH and its  
programs, we invite you to visit our website at  
[www.neh.gov](http://www.neh.gov)

---

NATIONAL ENDOWMENT  
FOR THE HUMANITIES  
WASHINGTON, D.C. 20506  
**OFFICIAL BUSINESS**  
PENALTY FOR PRIVATE USE, \$300